

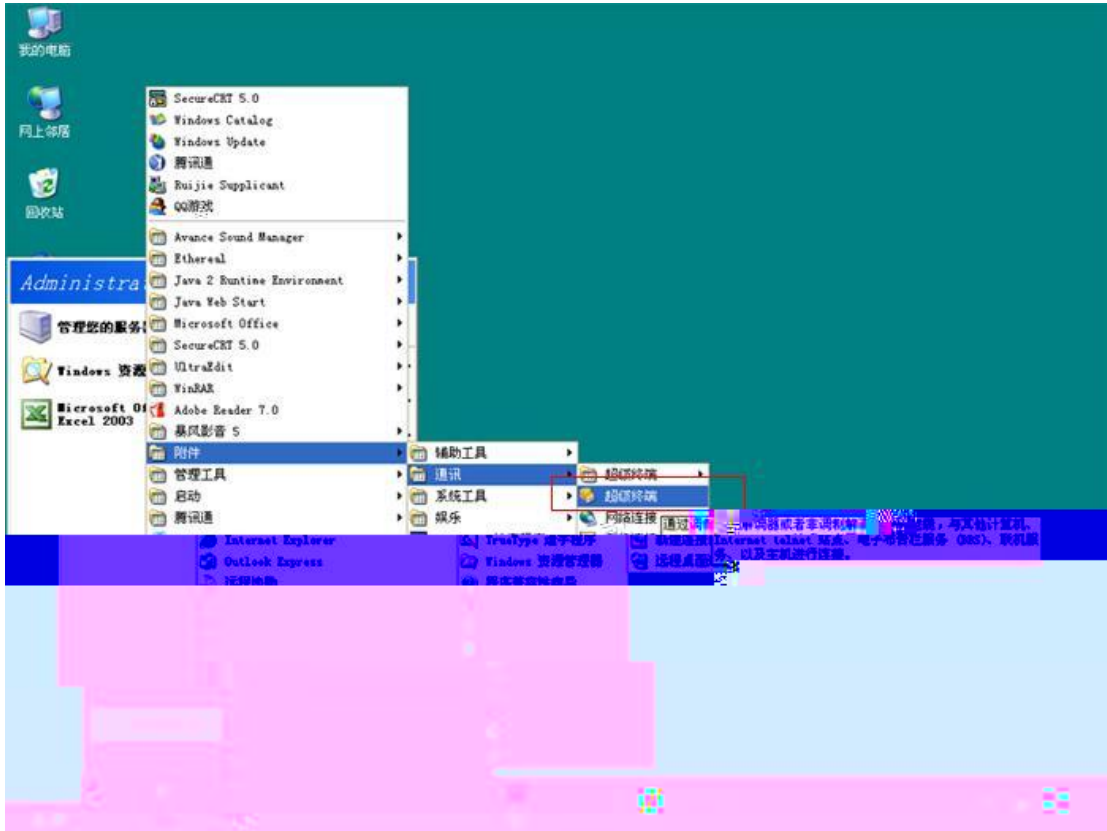


# NBR100

1

PC

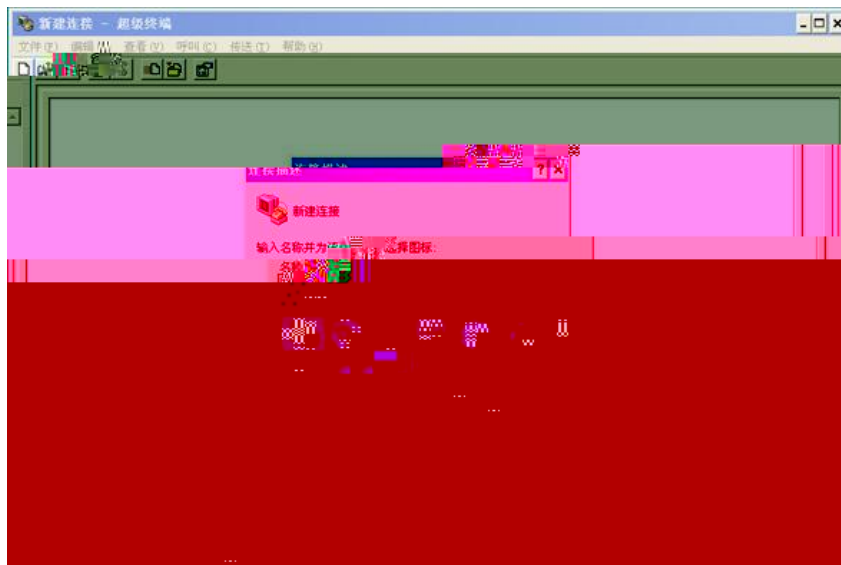
Windows Hyper Terminal



2 PC

star

line giant









7 At any point you may enter a question mark '?' for help.

Use ctrl-c to abort configuration dialog at any prompt.

Default settings are in square brackets '[]'.

Would you like to enter the initial configuration dialog? [yes]: n

web setup ' n' ' y' ' n' ' ctrl+c'

Press RETURN to get started!

Red-Giant>en

Red-Giant#

write reboot

copy startup-configuration running-configuration

config term

enable secret 0 abcde ' abcde'

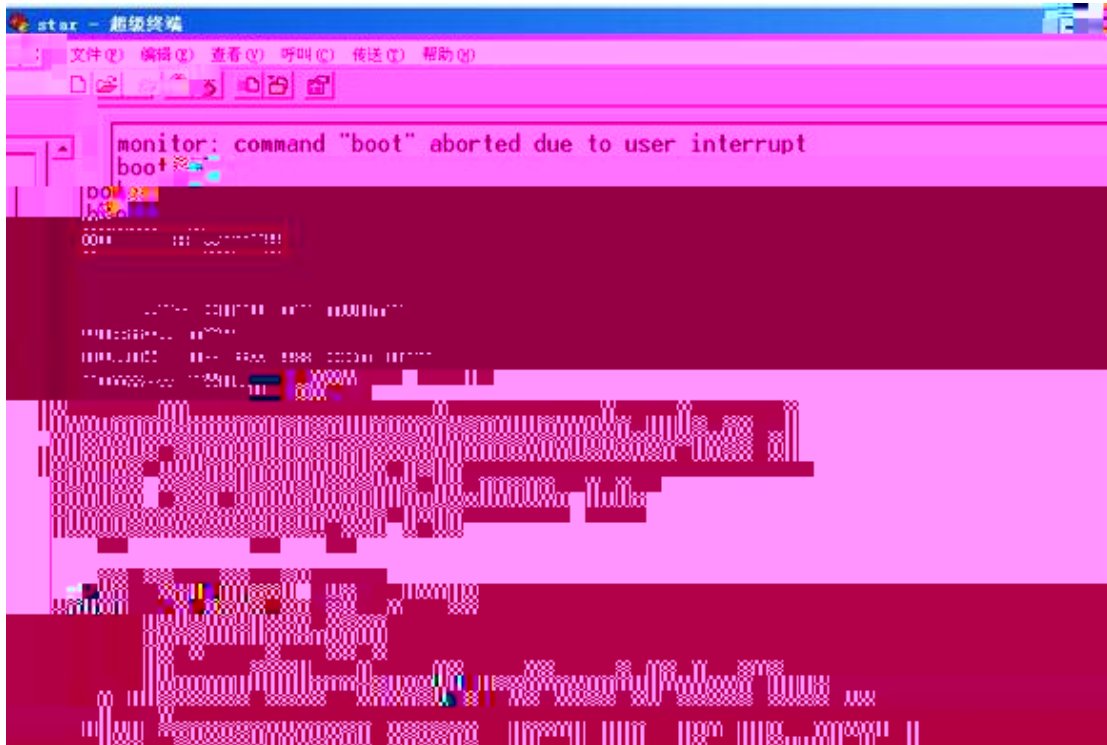
ctrl+Z

write

NV

reboot





9

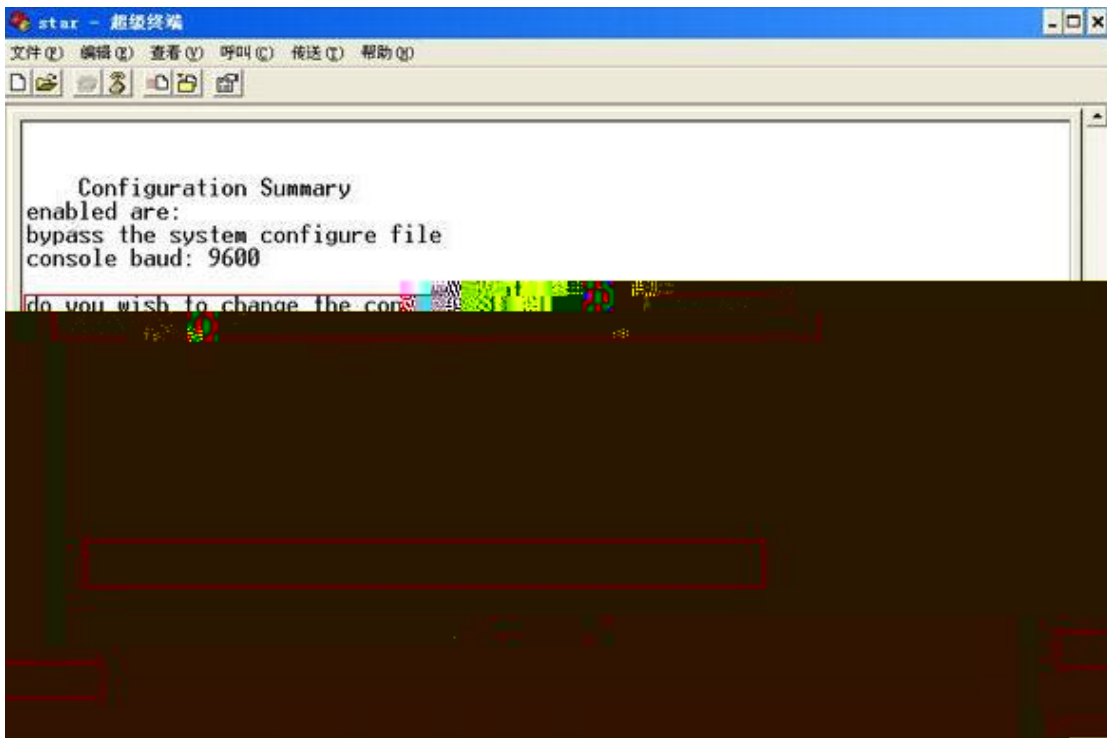
n

do you wish to change the configuration? y/n [n]: n

program flash location 0x2070000

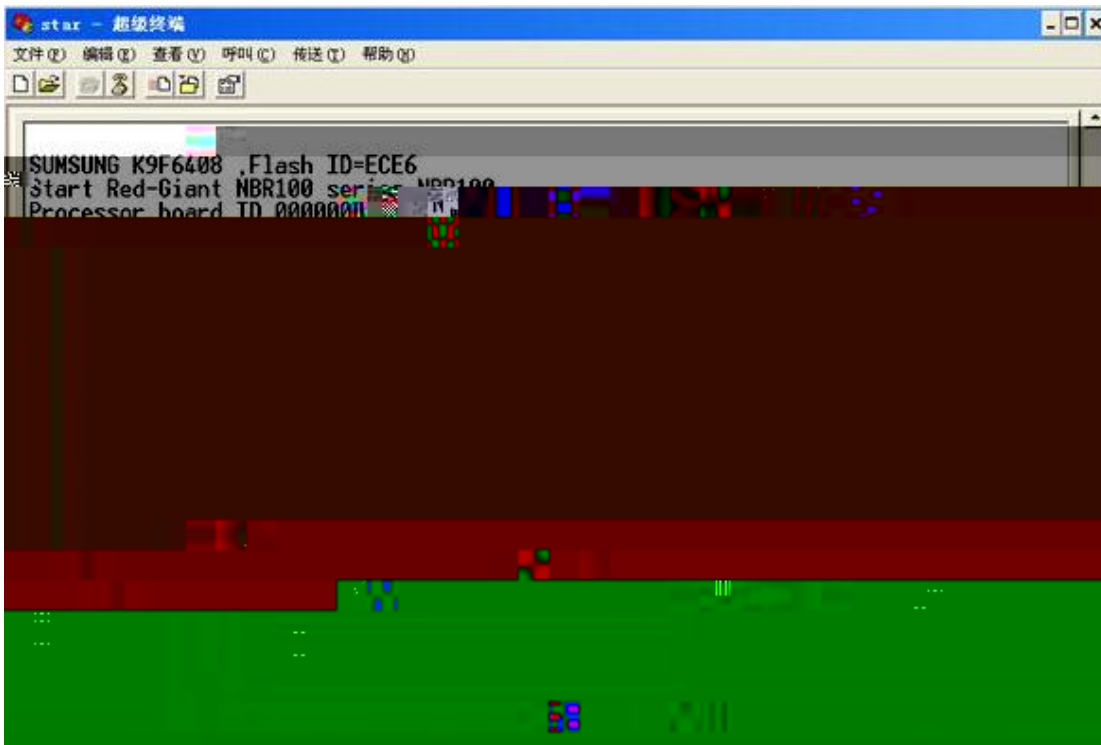
You must reset or power cycle for new config to take effect

boot: reset



9

boot: reset



-- --

