

RG-NBR300

©2009

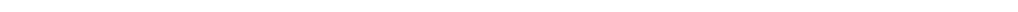
RGOS RGNOS®

®



NBR NBR80, NBR300, NBR1100, NBR1200, NBR2000,
NBR2500 NBR3000

NBR



Z

NBR

Z

Z

Z

Z

LED

Z

DHCP

NAT IP

PPPoE

Z

NBR

NBR

RG-NBRxxx

NBRxxx

z
z
z

1

5

Terminal Display
8.5

Terminal Display

Courier New

2

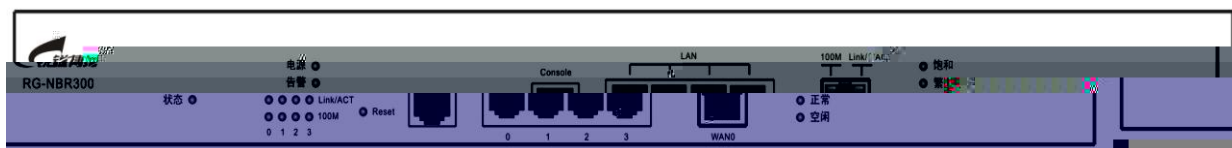
		1
1.1	NBR	1
1.1.1	NBR300	1
1.2		2
1.2.1		2
1.2.2		3
1.2.3		3
1.2.4		3
1.2.5		3
1.3		3
		7
2.1		7
2.2		7
2.2.1	/	7
2.2.2		8
2.2.3		8
2.2.4		9
2.2.5		9
2.2.6		10
2.2.7		11
2.3		12
		13
3.1		13
3.2		13
3.2.1		13
3.2.2		14
3.3		14
3.4		14
3.5		15
		16
4.1		16
4.1.1		16
4.1.2		16
4.1.3		19
4.1.4		19
4.1.5	Setup	21
4.2	Web	23
4.3	Web	24

NBR

1.1 NBR

1.1.1 NBR300

1.1.1.1 NBR300



1-1 NBR300



1-2 NBR300

1.1.1.2 NBR300

NBR300

	SDRAM 64MB
	FLASH 8MB
I/O	WAN 1 10/100M
	LAN 4 10/100M
	1
	10Base-T/100Base-TX
	RS-232
(× ×)	44.4mm× 437mm× 210mm

	200-240V~;50Hz
	20W
	0~45
	10~90%

SDRAM

FLASH

1.1.1.3 NBR300

	NBR
LINK/ACT	
100M	100M 10M
Reset	5 5
CPU	

1.2

1.2.1

- z RJ45 ARP
- z TCP/IP IP ICMP IGMP TCP UDP
- z IP RIP(V1/V2)
- z SNMP
- z TELNET
- z DHCP Relay
- z PPPoE
- z X-MODEM
- z NAT
- z TFTP

1.2.2

z
z

1.2.3

z
z
z
z Console
z TELNET
z TFTP

1.2.4

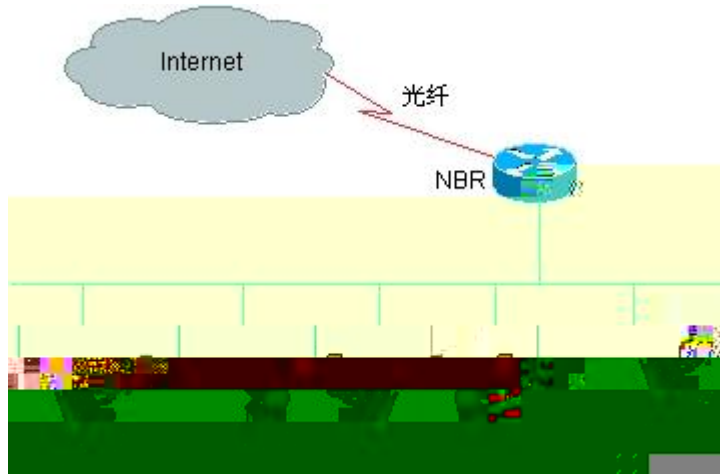
z IP
z PPP PAP CHAP
z MAC
z NAT

1.2.5

z X-MODEM (Windows 95 Windows NT
z UNIX DOS) Console
z TFTP
z BOOTROM

1.3

z **NBR**
z NBR NBR80,NBR200,NBR1000E



1-15 NBR

1

NBR

Internet

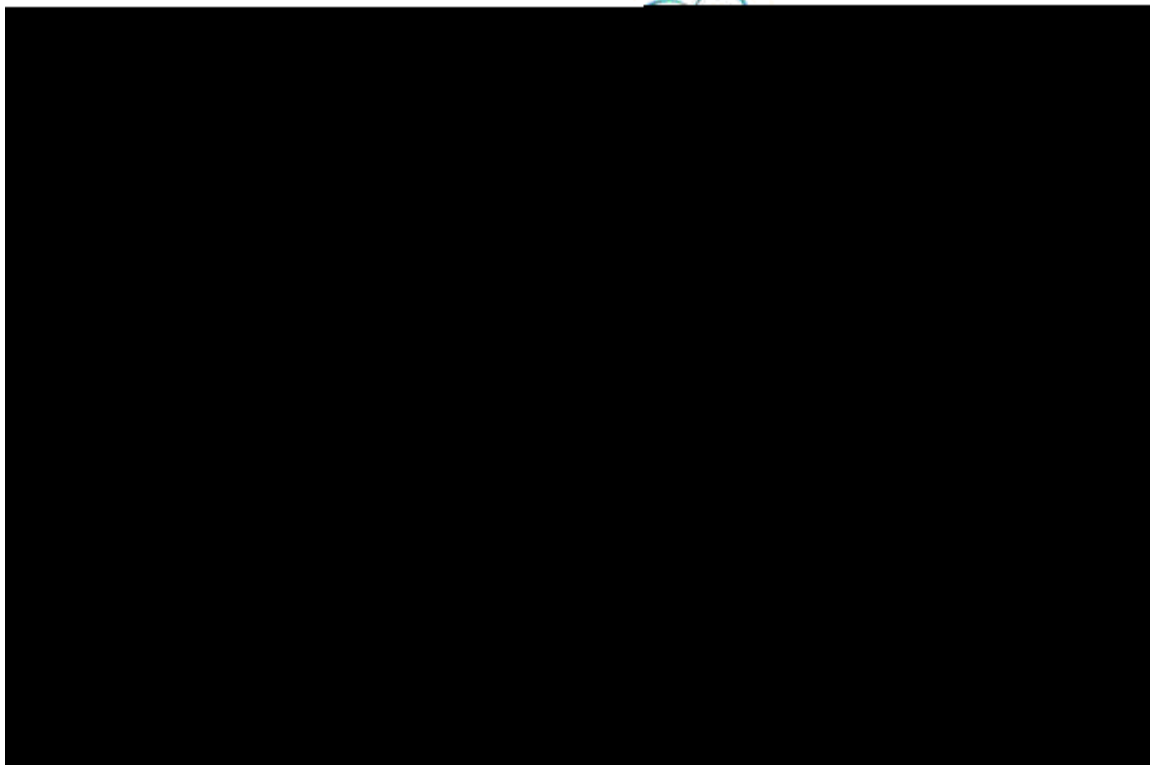
1

2

3

DDOS

Z



1-16 NBR

2

1000M

100M

200

2

3

2

NBR2000

2

3

3

3

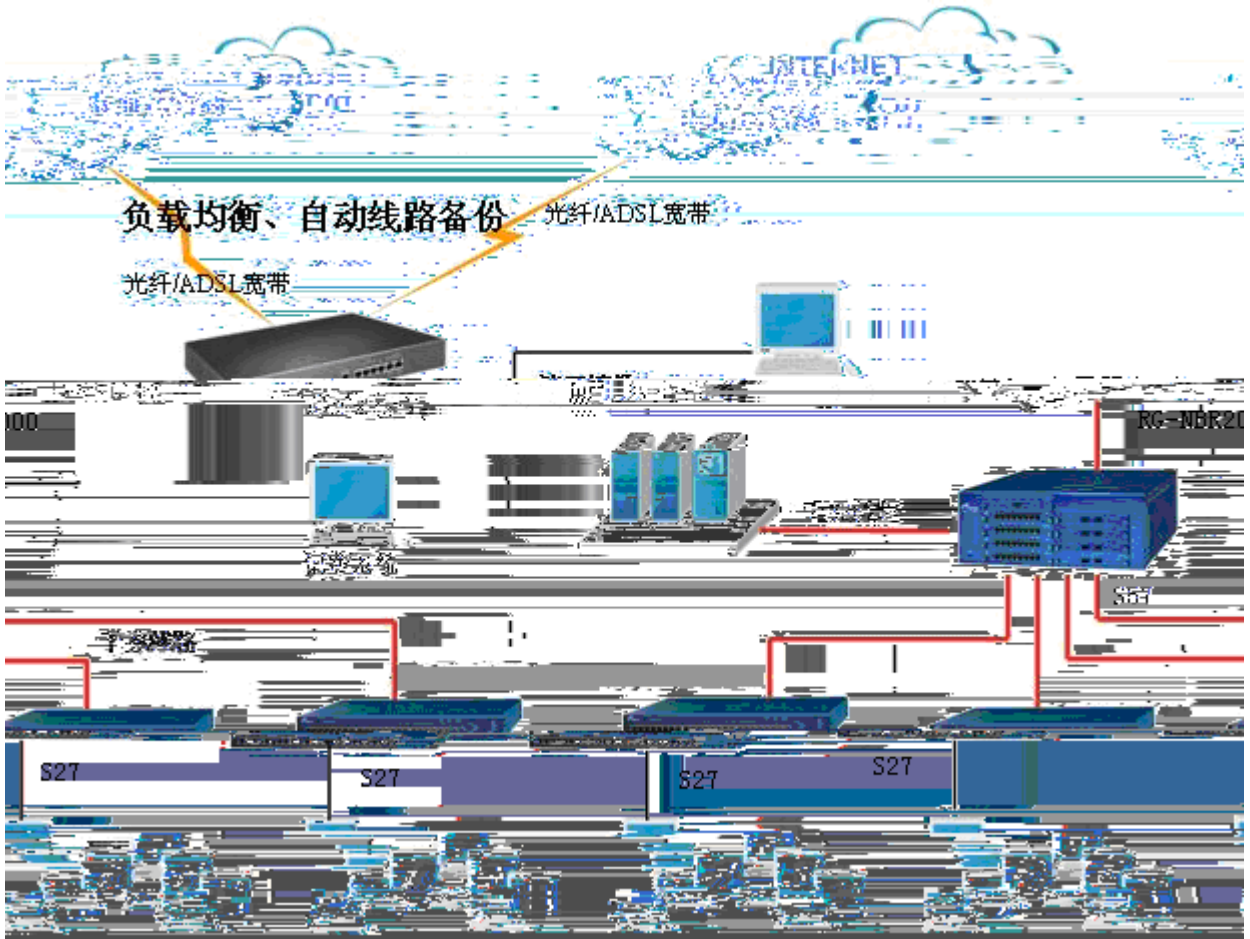
3

3

4

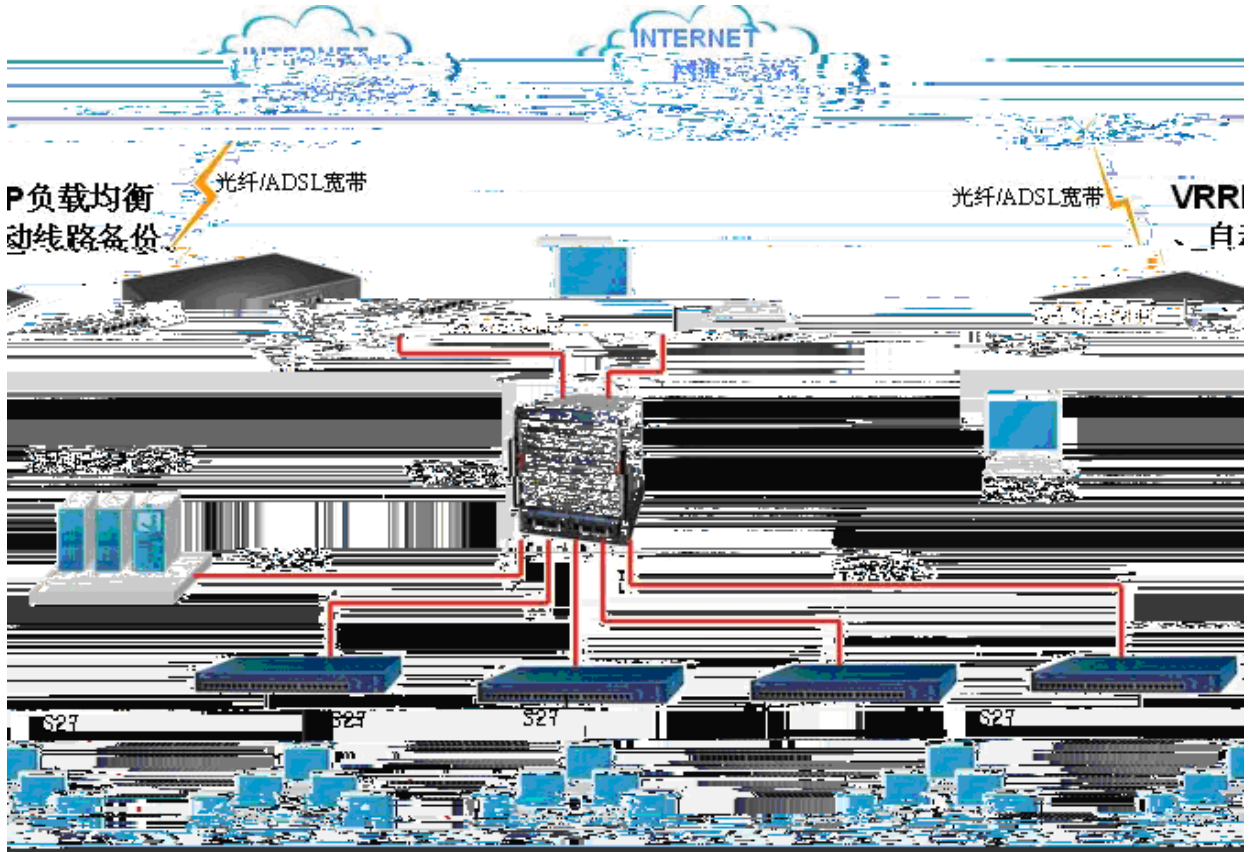
301

- 1
- 2 100M
- 3
- 4 DDOS
- Z



1-17 NBR 3
NBR2000 3 1000M 3
3 NBR2000

- 1 3
- 2
- 3
- 4
- 5 DDOS
- Z



1-18 NBR

4

400

S65

2.1

0.4m			1.5m
	48	15	
			5

2.2.2

(μ m)	0.5	1	3	5
(1.4×10^7	7×10^5	2.4×10^5	1.3×10^5
)				

NBR

Z
Z
Z
Z

2.2.4

Z
Z
Z
Z

2.2.5

NBR

NBR

2.2.5.1 WAN

WAN ADSL Modem
10/100M WAN 10/100M 1000M WAN ADSL Modem
10/100M
WAN

2.2.5.2 LAN

LAN
10/100M LAN 10/100M 1000M LAN

2.2.5.3

1

GB50174-93 IEC 61312-2 GB50057-94

2

GB50057-94

LPZ0 LPZ1

IEC

LPZ1 LPZ2

LPZ2 LPZ3

3

4

GB50174-93

4

2.3

z

z

z

z

z

z

z

z

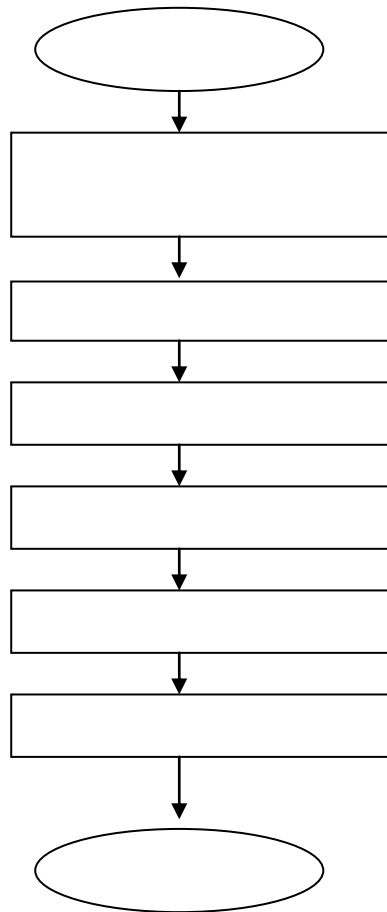
z

z HUB

z (Windows PC)

z

3.1



3.2

z
z

3.2.1

3.2.2

Z

Z

Z

10cm

DB-9 Ä DB-25

NBR

NBR

NBR

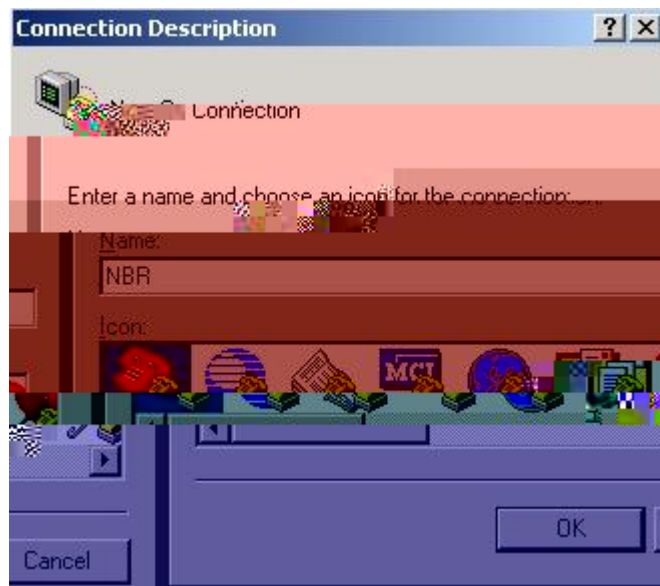
NBR

4.1

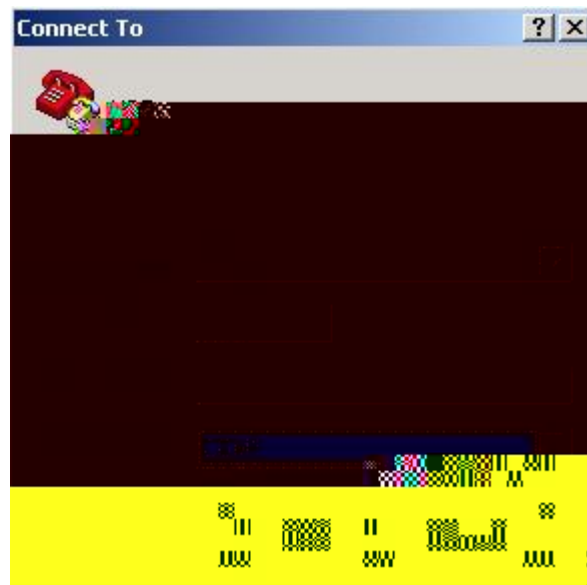
4.1.1

NBR

IP

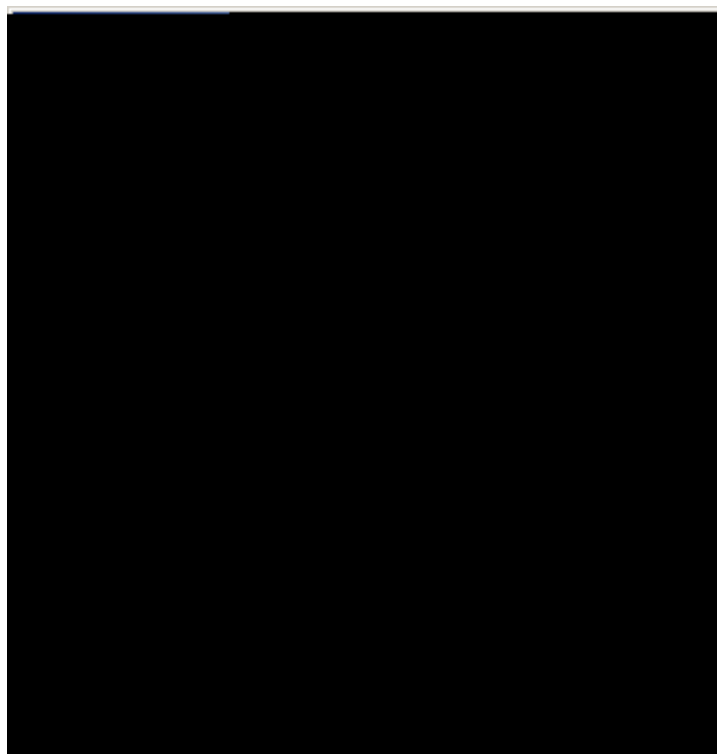


4- 2

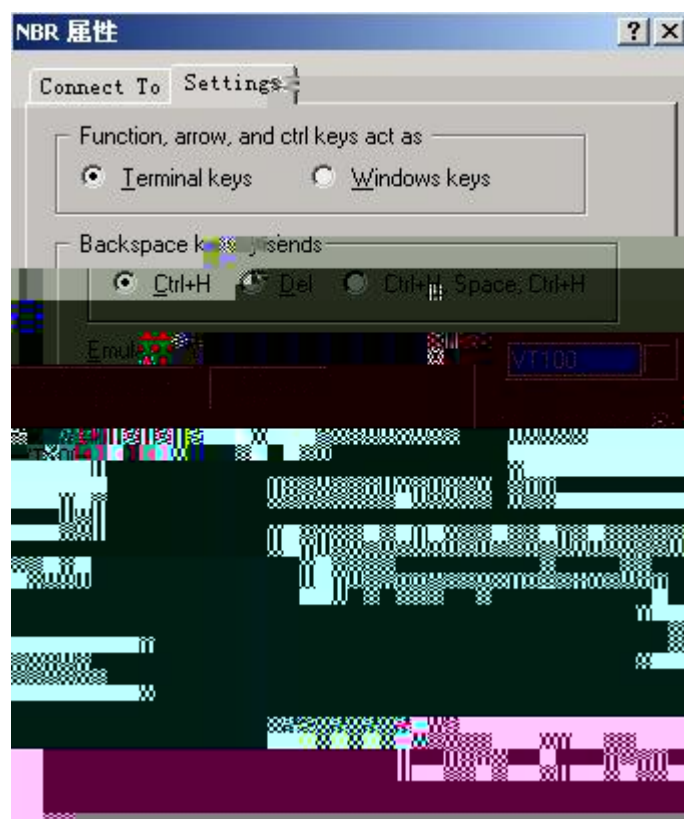


4- 3

Console



4- 4



4- 5

4.1.3

4.1.3.1

z

z

z

4.1.3.2

```
!!!!!!!!!!!!!!!!!!!!!!!!!!!!!!!!!!!!!!!!!!!!!!!!!!!!!!!!!!!!!!!!!!!!!!!!!!!!!!  
!!!!!!!!!!!!!!!!!!!!!!!!!!!!!!!!!!!!!!!!!!!!!!!!!!!!!!!!!!!!!!!!!!!!!!!!!!!!!!  
Red-Giant Operating System Software  
RGOS (tm) RELEASE SOFTWARE, Version 9.15 building 6
```

4.1.5 Setup

```

                                setup
                                setup
setup                               WAN0      IP
WAN1      PPPoE
NBR#

-----

ctrl-c                               '['

:

:aaa                                  :nbr

telnet                               :bbb

internet WAN :
0. WAN 0
1. WAN 1
   (0 - 1):0

:
1. IP
2. PPPoE
3. DHCP IP
   (1 - 2):1
WAN IP:202.101.1.1
WAN :255.255.255.0
IP :202.101.1.254
ISP [no]:yes
:202.101.1.1
:202.101.1.3
WAN [yes]:

(1. DNS ;2. ping ):1
IP :202.101.98.55
ISP Kbits (1-1000000):10000

WAN [no]:yes

internet WAN :
0. WAN 0
1. WAN 1
   (0 - 1):1

:
1. IP

```

```

2. PPPoE
3. DHCP   IP
   (1 - 2):2
   PPPoE   :user
   PPPoE   :user
   ISP     Kbits (1-1000000):500

           WAN [no]:

:         telnet           LAN IP
           LAN           LAN

           [no]:

           [no]:

           (LAN):
(0 - 3):

           (LAN):
(0 - 3)      ', ' :

:

0.
1.
2.

(0 - 2):

           [yes]:
WAN ping [yes]:

:
           :nbr
           :aaa
telnet           :bbb

:
WAN 0:   IP
           : 202.101.1.1 255.255.255.0
           :202.101.1.254
NAT           :202.101.1.1 202.101.1.3
           :   DNS      202.101.98.55
           : 10000 Kbits
WAN 1: PPPoE
           :user
           :user
: 500 Kbits

:
: LAN0           : LAN3

:
WAN ping :

           [yes]:

```

NBR

Setup

NBR

RGOS

CD-ROM

RGOS

RGOS

www.ruijie.com.cn

4.2 Web

LAN

WAN

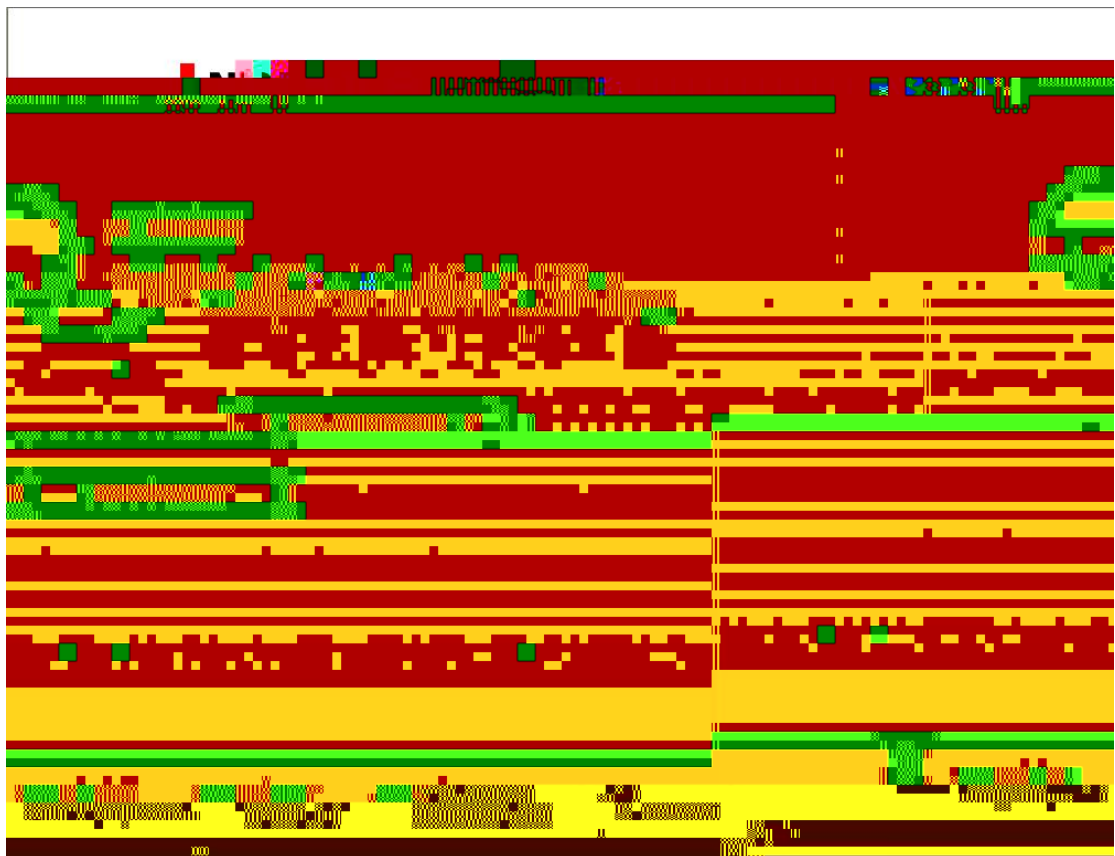
IP

PC

IP

IP

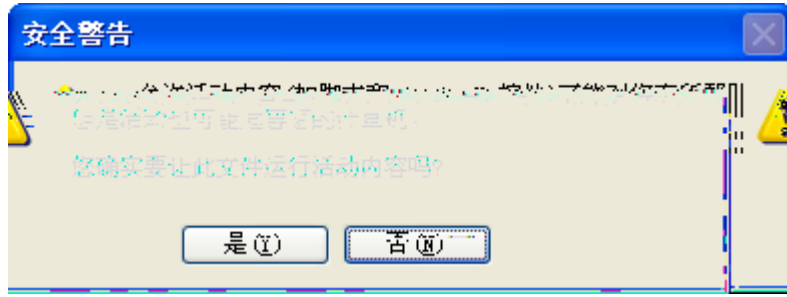
<http://192.168.1.1>



4-6

" WEB " " "

WEB WEB " (Y)"



4-7 " (Y)"

" WEB

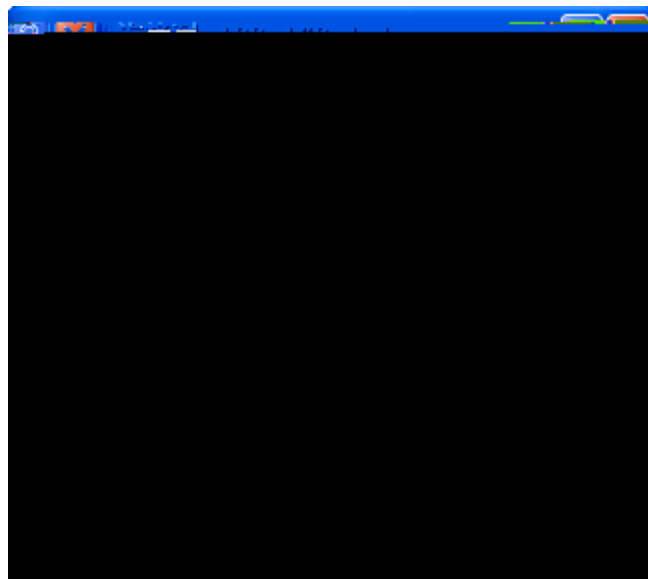
" "

"

WEB

admin

admin



4-8

js web flash web htm

" " " WED
" Web

4.3 Web

web WEB
.doc