



·oe §Ä Ä V1.24Å

**RG-NPE 3G**

**5A7**

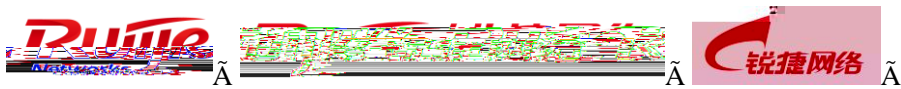


©2000-2012

©2007

©2008

©2009



# 1

☎ 5540 <http://www.ruijie.com.cn/> Ä

Ø XE 90x dtÉ Äx ãLÛNÈÄ Äx rÄ  
+X@ã Ä E 4x CtÉy 1yÄ

☎ 5X40 <http://webchat.ruijie.com.cn>Ä

Ø CE 8:308š 6È FJE÷ X4È 9Ç 70;B3BÄÄ  
E80,1M0;E01È.Ä& È Ä

☎ 5F0;10 <http://www.ruijie.com.cn/service.aspx> Ä

☎ 5F0;1p9,0ÈM0;10 ä  
x0Fw,x r Ä E 55W7-,LN0  
š-6È50,1Ä

7h 24 È 40 4008-111-000

☎ 5A0 <http://support.ruijie.com.cn>

☎ 51 0, 10 [service@ruijie.com.cn](mailto:service@ruijie.com.cn)

## -(EtÉ

Ø	B
È È ¼	È È
È ¼	È È



---

XI@§                      RG-NPExxx 3+G510 j@§                      NPExxx 3+G5Ä

B4;B5ZjLtv,y-jE69iEJ.

Äpaie"D)Ä                      456FÖLu6554P;CJë

F65ž                      Ä

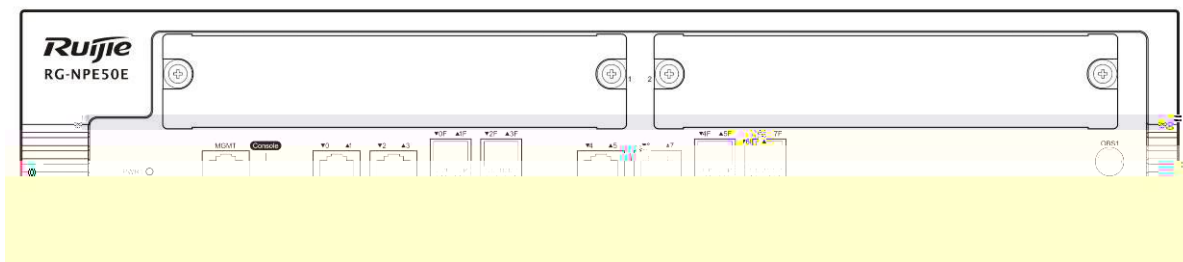
1 ú

2

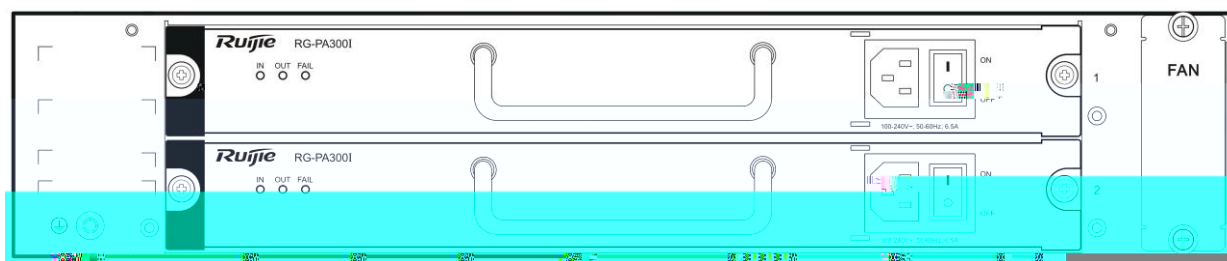


## 1.1.2 NPE50E 5E

### 1.1.2.1 NPE50E 5E



1-3 NPE50E 5E M



1-4 NPE50E 5E M

### 1.1.2.2 NPE50E 5E

#### NPE50E, G5A

N	F
Ø	DDR2 Sdram 4GB
	NorFlash 8MB
	NandFlash 512MB

I/O A5Z

svZ5Ö

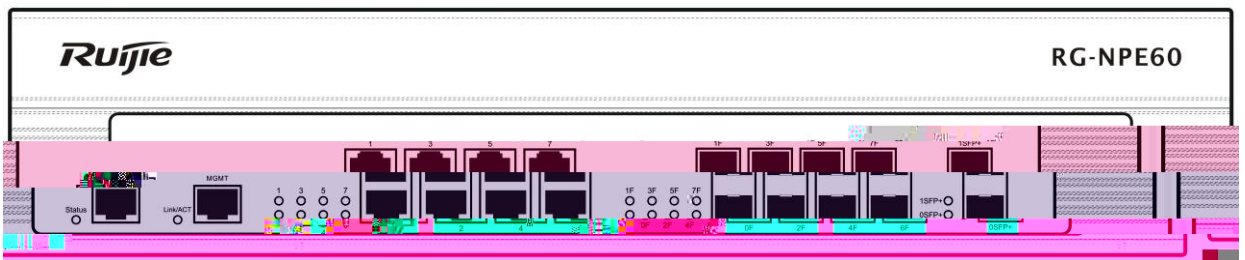
1 8 y+e+X1Z1wF> WAN/LAN 7È  
 1 0/1Ã 0/3Ã 0/5Ã 0/7 UAÔ WAN È 0/0Ã 0/2Ã  
 0

BYPASS	<p>BYPASSÖ</p> <p>1 0/0-0/1, 0/2-0/3 T Ä</p> <p>BYPASSÖ</p> <p>BYPASSÖ</p> <p>y BYPASSÖ</p> <p>BYPASSÖ</p>
0	1 2 Z RG-PA300I
'	N
Ö	<p>Ö 10Base-T/100Base-TX/1000Base-TX,</p> <p>1000BASE-SX/LX/ZX</p>

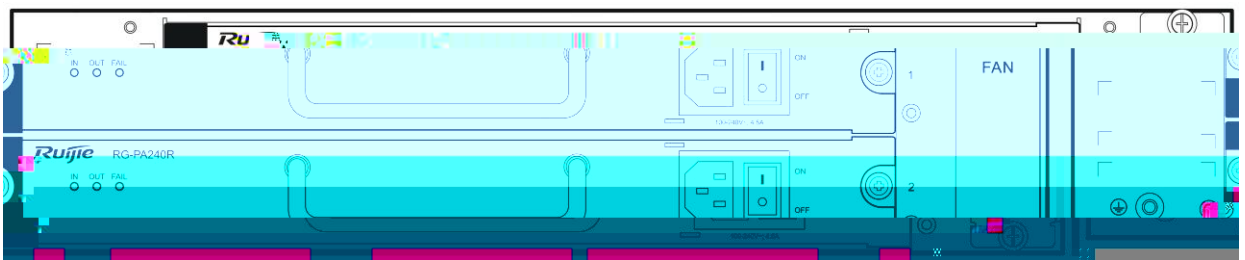
		100	#6R
SD		100	6R
USB		100	6R
100	Link 7	link 88	
100	ACT 7	9	
0-7		100	100/100
0F-7F	sy7	link 68	
OBS0,OBS1	y	100	
BYPASS	7		

### 1.1.3 NPE60 5E

#### 1.1.3.1 NPE60 5E



1-5 NPE60 5E M



1-6 NPE60 5E M

#### 1.1.3.2 NPE60 5E G5Z

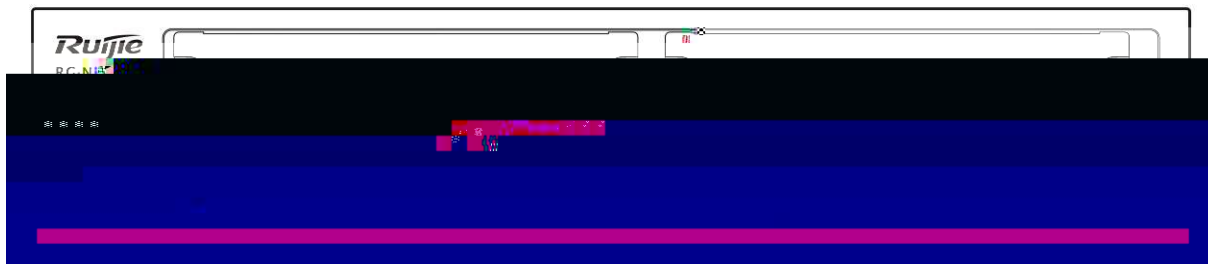
##### NPE60 ,G5Z

N	F
Ø	DDR2 SDRAM 2GB
	BOOTROM 2MB
	FLASH 512MB



## 1.1.4 NPE60E 5£

### 1.1.4.1 NPE60E 5£



. 1-7

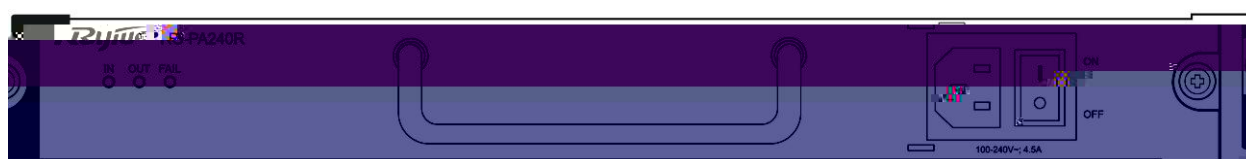
	SD Ö 1 P
BYPASS	<p>BYPASSÖ</p> <p>1 0/0-0/1, 0/2-0/3</p> <p>BYPASS</p> <p>y BYPASSÖ</p> <p>BYPASS</p>
	1 2 Z RG-PA300I
	N
	<p>Ö 10Base-T/100Base-TX/1000Base-TX,</p> <p>1000BASE-SX/LX/ZX 10G BASE-SX/LX</p> <p>Ä &amp; RS-232</p>
(W h Hh D)	440mmh 88.1mmh 420mm
	100-240V~;50-60Hz
	¼ 100W

FAN	88ç 88ç 88ç 48ç
SD	88ç 88ç
USB	88ç 88ç
18ç Link 7ç	link 88ç
18ç ACT 7ç	98ç
0-7 ç	88ç 88ç / 88ç 8ç 88ç
0F-7F sy7 ç	link 88ç 88ç
OBS0,OBS1 y BYPASS 7ç	88ç 88ç
0SFP+ 1SFP+7 ç	58ç Link 58ç ACT 88ç Link

## 1.2 88ç

### 1.2.1 RG-PA240R 88ç

#### 1.2.1.1 88ç



1-9 RG-PA240R + 88ç

7/jB\$	88ç
IN	88ç 88ç hç 88ç 88ç
OUT	88ç 88ç 5/8hç 88ç 88ç &
FAIL	+e88ç 88ç +e88ç 88ç 48ç

#### 1.2.1.2 88ç 88ç

88ç	88ç
88ç	100-240V~; 50-60Hz; 4.5A



### 1.3.1 ~~AP~~

```

NPE 3+G5E      F2+XGJ,55)AÖ
  4i      RJ45 5AÄ      ARP AB
55r:1      TCP/IP A27Ä      IPÄ ICMPÄ IGMPÄ TCP ¼ UDPÄyAB
1J/y      IP :,D+aAÖ      RIP(V1/V2)È OSPF 1y
15516AB      SNMP
1 TELNET
1 DHCP 1y
1 PPPoE
128EÄ      X-MODEM w4x8
1 NAT
11#D+a
1 VRRP
1 L2TPÈ PPTP AB
1 TFTP
    
```

### 1.3.2 ~~Ä~~ ~~M~~

```

E9ME5#B4X4Ä
+XJ4G-9B4;B57;úL6Ä Ä
8      web +M7ö      CLI G5žME-4X @ 55ÖWÄ
    
```

### 1.3.3 ~~Ä~~ ~~Ö~~

```

#B3BDDZ#      DEBUG 7#5uLÄ
#A#M/j7-EXg)55,W7-740-1Ä
1J/40,65Ö
FJE÷Console F#5ž
FJE÷TELNET ,65ž
FJE÷TFTP 8}      5ž
    
```

### 1.3.4 ~~8~~ ~~W~~

```

G+X%1b8      IP 5E% 55pÄFA2wFpÄ
PPP A#8      PAP ¼ CHAP AÄ
1 MAC p5E-Ä
55p6+B°      NAT
    
```

### 1.3.5

G+Xk.D,θ DPI EÖA5 P2P AXÄ IMÖK  
 1J551yXkj 600 J/Ä  
 5•5GyLÄx 2465F(ÄXÄ+XÄy(æ  
 7ÄXg,ÖÖ /-, IP pÄ  
 ÄXÄÄ Session ÖW1yB4Ä  
 1XgÄ IP pÄ IP pÄX1yjLkÄ  
 Ä-ÖHx fÄ Session Gy f1yÄ  
 14B;G5F+Xg4Ä IP 4Ä P2P AÄ2Ä2\*  
 ,ÄXÄ(4x [+XgFV1Ö1+;x fÄ

### 1.3.6 %ÄÄ

5•5GyLÄx 2465F(ÄXÄ+XÄy(æ  
 7ÄXg,ÖÖ /-, IP pÄ  
 ÄXÄÄ Session ÖW1yB4Ä  
 1XgÄ  
 1XgÄ

### 1.3.7

12BEÄ X-MODEM AÄ4/y (² Windows 95Ä Windows NTÄ  
 UNIXÄ DOS 1y);FJE÷ Console ;Eäv4x(xÄ  
 1FJE÷ TFTP AÄÄÄÄ  
 1 BOOTROM X4w4x Ä  
 1804x FJE÷ web Fw4x

### 1.3.8 A7 EÄe

1Ö+a Ö QyJ/G5Ä6%Ca1yG5ÄÖ 1Ä  
 ÖÄA7G5Äx fÄ Öy ÄÄ 2ÄÄ5  
 6LÄ5W7-x+O+Ä.  
 pÄe BYPASSÄA7+eÖ1y2hEpe Ý Ä

2 5€



2.1 ■ ©

5€ ~~ap 57-EE~~

X 5€ ,5XE0;CAP

,1 d°

z B=± A7 n5X9"d,EP

A7 Ä

B6 A7 n5XF/Ä

z B:ÄÖ A7 ,hÖ

B+XgX5Ö;kÖ

X

## 2.2.1 ~~Ö~~ ~~Ö~~

Añ A7 ~~50~~

E~~5~~ ~~5~~ ~~5~~ ~~5~~ ~~5~~

55 ~~5~~ ~~5~~ ~~5~~

G~~5~~ ~~5~~ ~~5~~ ~~5~~

A7 ~~5~~

A7 ; μ

~~Ö~~ 63 ? ~~501~~

Ö

\$Ö		-()Ö	
ÖE	.ÖE	ÖE	.ÖE
15 ~30	0 ~45	40%~65%	10%~90%

## 2.2.2 ~~Ö~~

~~Ö~~ A7 ~~5~~

A7 ~~5~~

A7/~~5~~



SÖ

10

LbM%7...

FÖ565Ö

+eÄ

G5Äi

Z5Äi

Ö

-(A75Ö

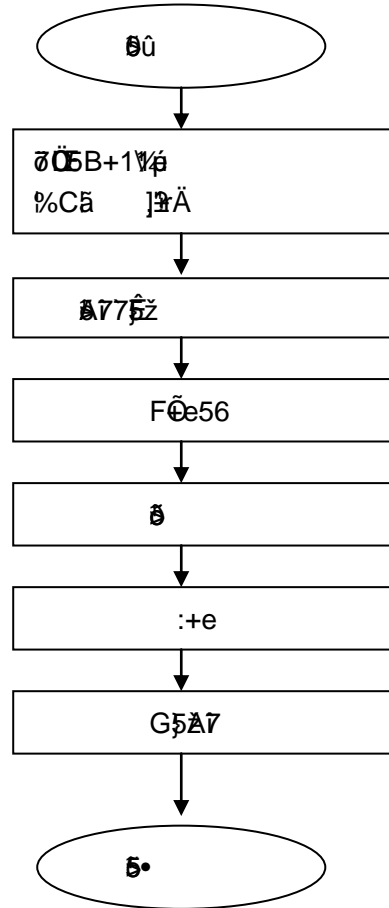
HUB

# 3 5£ 5

## 3.1 5£ 5

5£ 5£  
5

5£ 5£



## 3.2 É 5£ 5ž

5 A7 7£ž  
ÉÄ 5£ 508)P  
P  
KCE

É A7Ä 56P

5£ É

### 3.2.1 P

5£ 5£ 5£A  
P

5£

### 3.2.2

75  
Ö

6- A7 5E.

A6cW8

+XLjy, E

5E

E, 3

A7 %

10cm, 0E

A7 :Mh5E

### 3.3

Ö

NPE 3+G5E

)E

63 7B

101 1A

Ö

100-240~; 50-60Hz

B:AÖe%CA

5E ,+e94jE>X9WQ:(94+eFJ7-Pe

x EeW1(708eXB4Ee3+5,+e

W00Ae"4

B9:PÖ

10E

5E

LjV,+e01`

5E

j1M,+eA.E

1e

:Ä

1E

5E

M+eE+eA

### 3.4 ü ö

A6E3A

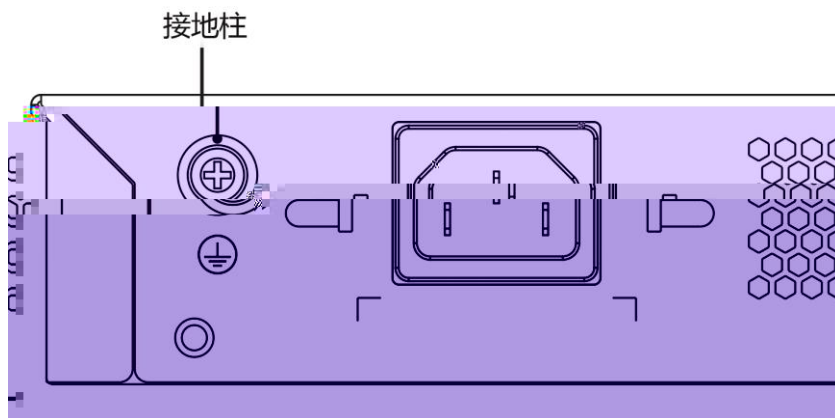
Ö

NPE3E

M

% 1Ö

3-2A



. 3-2 NPE3G A Ö

### 3.5

E 5 Z EIA/TIA-232 2503, G5ž ConsoleEJEFZ  
Xg@) 5 ,G5E÷ WEB 5E F5E IM0±  
 Fõf Ä

xf FÖ

ò	B\$
õ	RJ-45
õö	2† EIA/TIA-232
#©	1 9600bpsÄAÄ 57600bpsÈ 115200bps
1Ñ	1.õ 2.†V40-(F 3.0Z2Eõõ

EJE:PEÖ 5 xf Ö  
 +XLj,tVG54E1F` A7 ,xf È1FÖ ) A7 F5±  
 ,´ DB-9 dÖ Ä

### 3.6

5 E A7 E  
 9 A7 X j:Éþ A7 ,@JN(\*9XCEõ  
 V+9C0,0L0Z0cÄ  
 õeþõeÄ A7 †+e808Ä  
 õ A7 ,4VFCÄ  
 õ A7 5411yA7,Fõ+V!Ä

# 4 \_ 05Ž 5£

## 4.1 0 5£

### 4.1.1 65B

X 5£ 10MGE÷ Console 5£ F55

100p/jE0†V40F65p6FJE7ö RS232 456 ¼ 5£ ,

Console 5£x fMÄ FÄ

FJE÷Console 65B

10520,FJAA5E+XJEM0E40/-O0;E Windows

9E5E Hyperterm(C4x 40 )1yC4x 40jE99;Ä

C4x 40E6E9% 5£ , Console F0E5EJA0 9600

8 Ä 1 940/-O2\* VT100E

., Windows ,C4x 40,A5žMÄ



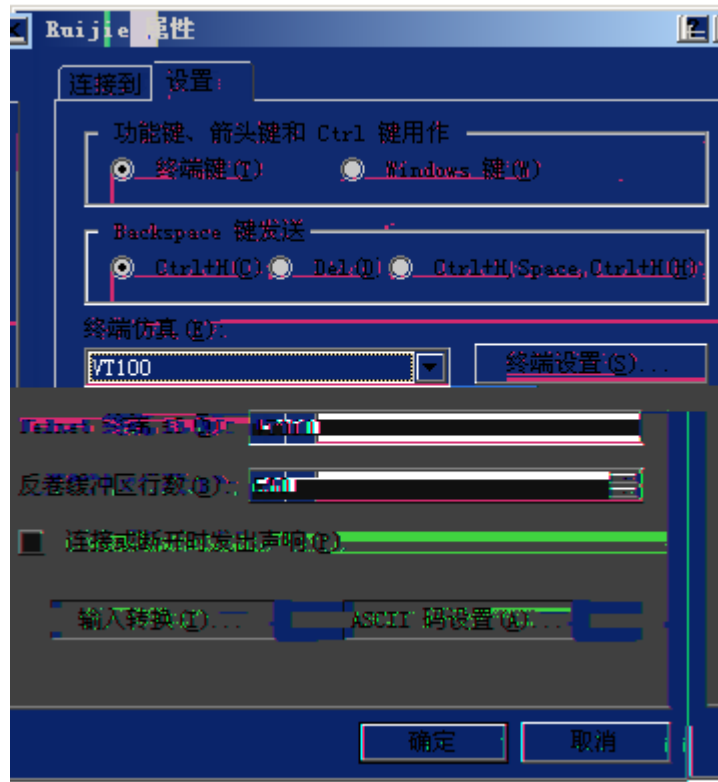
0EÖ



F9¼ 5£ , Console F0



A50,FJA3



F940/-O2\*

速率 52 F1+eÄ

### 4.1.2 52 ●

#### 4.1.2.1 ●

● 52 ●

+e0F0Z

E+e> 52 ,FV08\$

G5256F0!G5zXJF40V"40A5%

#### 4.1.2.2 52 ●

● 52 E+e0E

● 52 +e0E 52 +e05% ON5z

### 4.1.2.3

5£ • 5

FJNβ+5Vh

5 :+eNpEoNEX

5£ ,FJNptFBO

0°D, 5 Ä

5£ M:,7/jVh

5 B63101x 7/jB8²

Ä

G520Vn/jh

5£ :+e40:Jn/j

5£ E8@1yK

### 4.1.3

5£ 10 2k ? 8@ 5

Ø 5€ 5A

---

---

4.2 Ø 5€

5€ 5A 5A 5€ 5A 5€ 5A

53-65703

Ä

