

RG-

©2010



Ruijie



锐捷®

RG-EG

RG-EG 10.3 4T90

2012-4-10	V1.0	

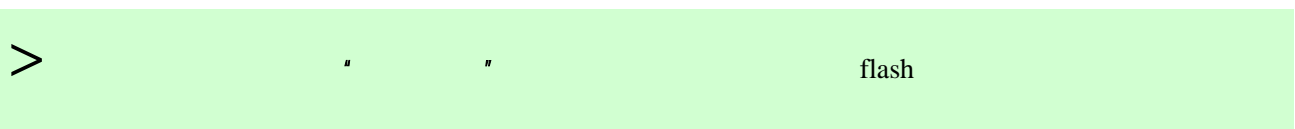
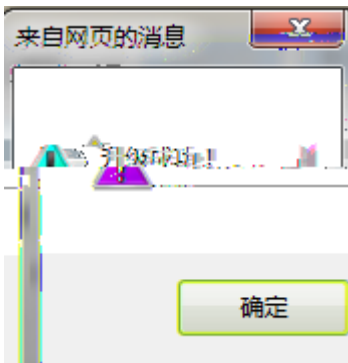
/	

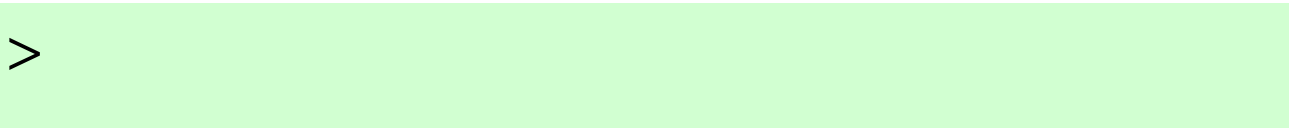
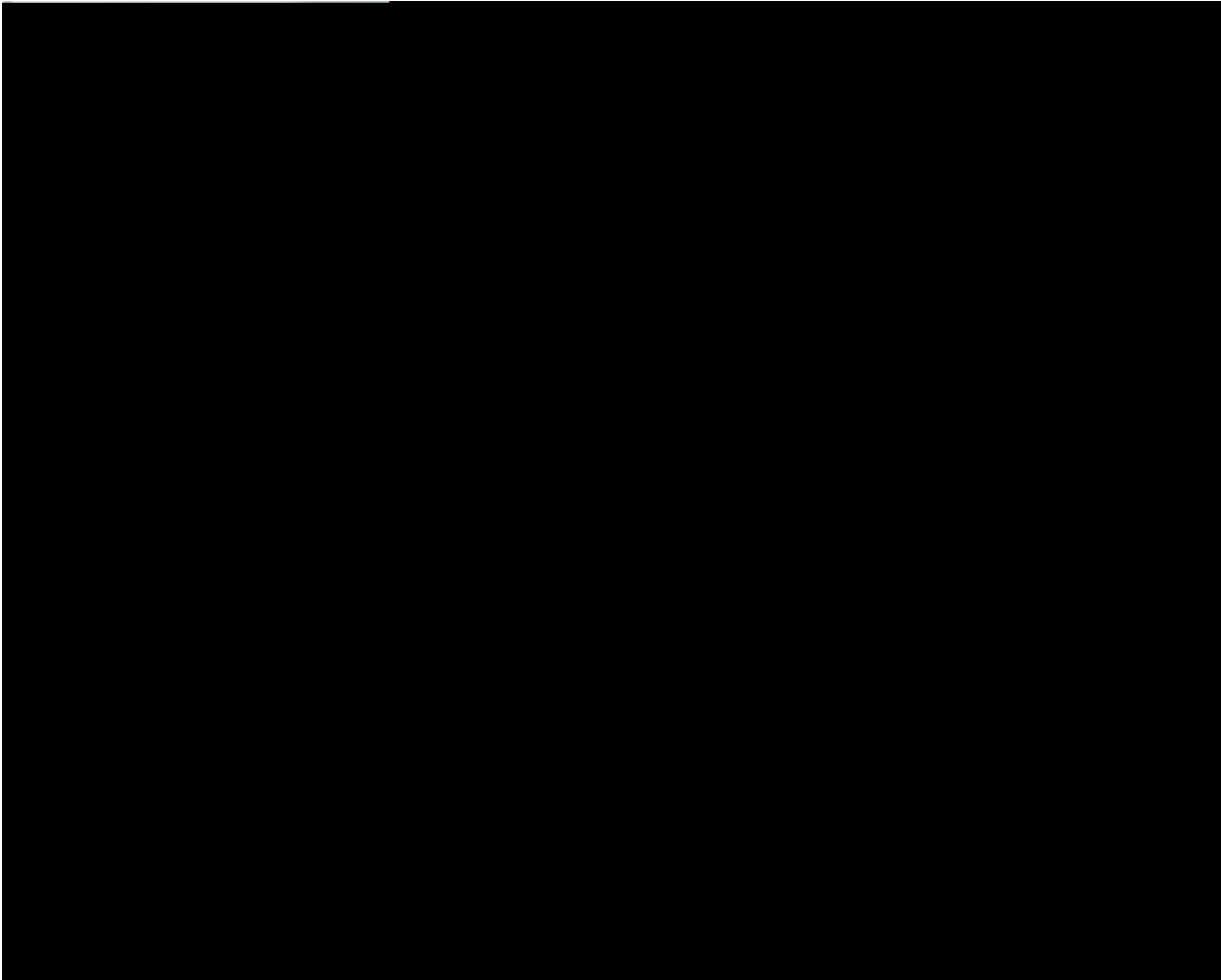
.....	6
WEB	7
WEB	7
.....	7
.....	7
.....	8
.....	9
WEB	10
EG WEB	10

CRTL	23
console	23
.....	23
startftp	24
.....	24
ctrl	28
.....	33

WEB

WEB





WEB

EG

WEB

MGMT

IP

IP

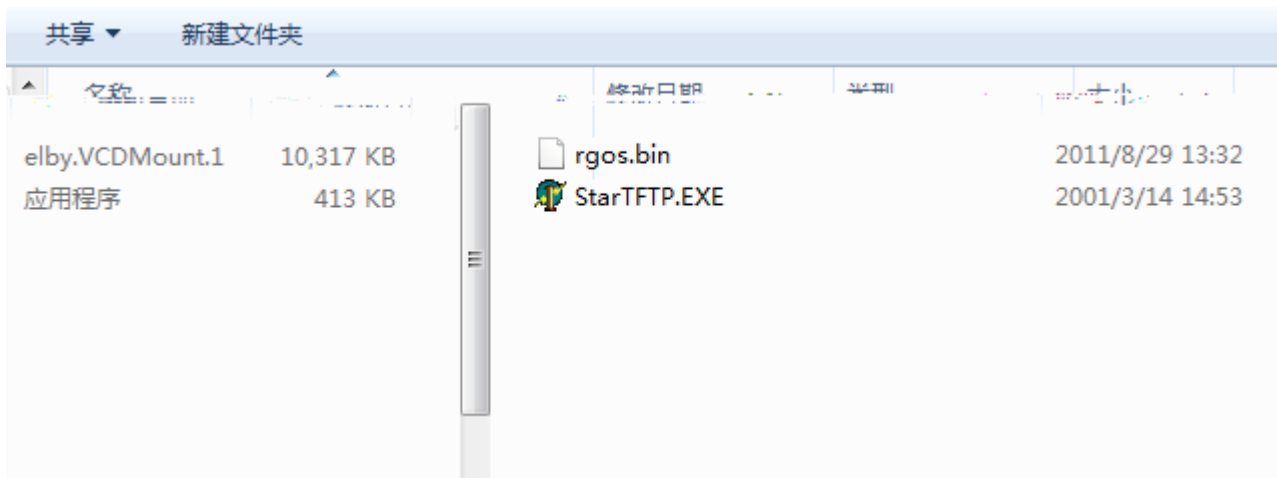
MGMT

IP

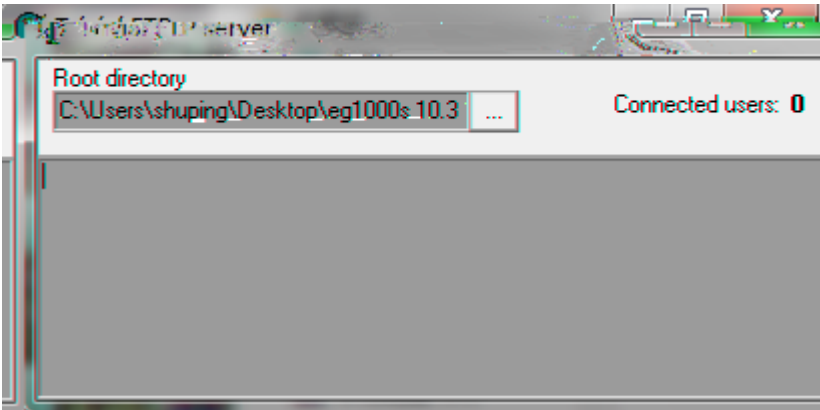
EG

rgos.bin

startftp.exe TFTP



startftp



?

windows

startftp

telnet/console

EG

>

EG

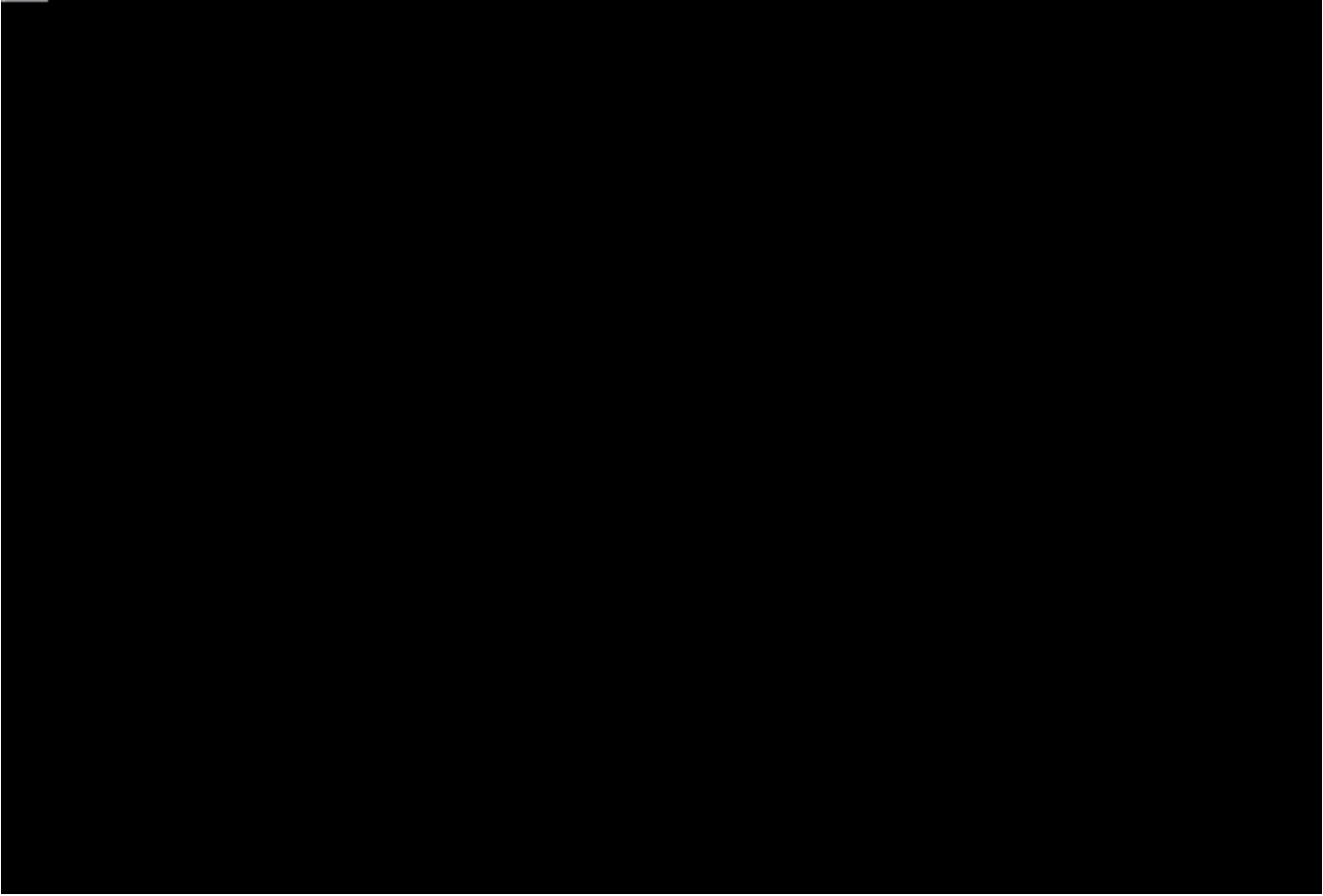
ip

192.168.1.1

copy ftp://192.168.1.10/rgos.bin flash:rgos.bin

192.168.1.10

IP

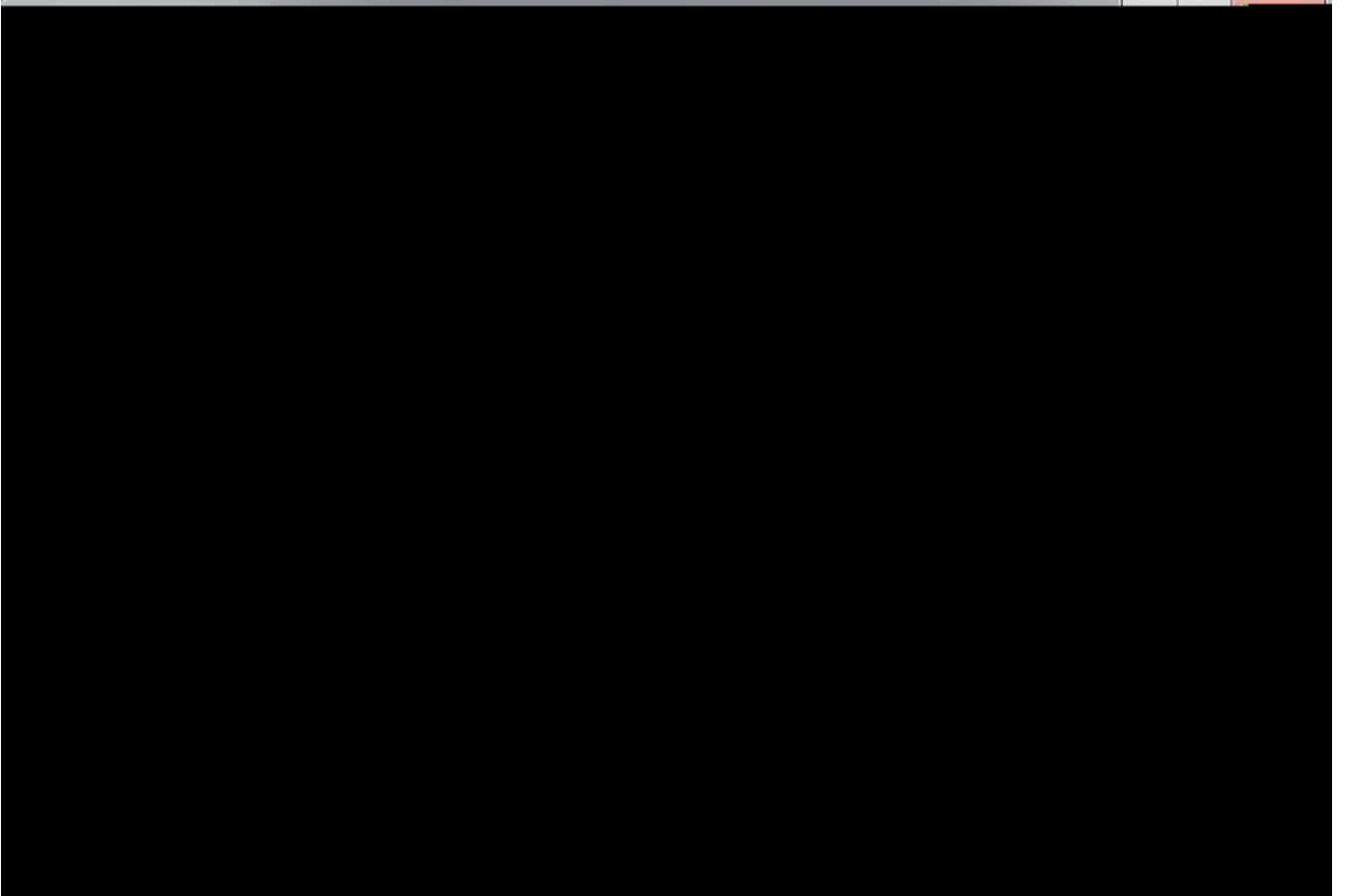


WR

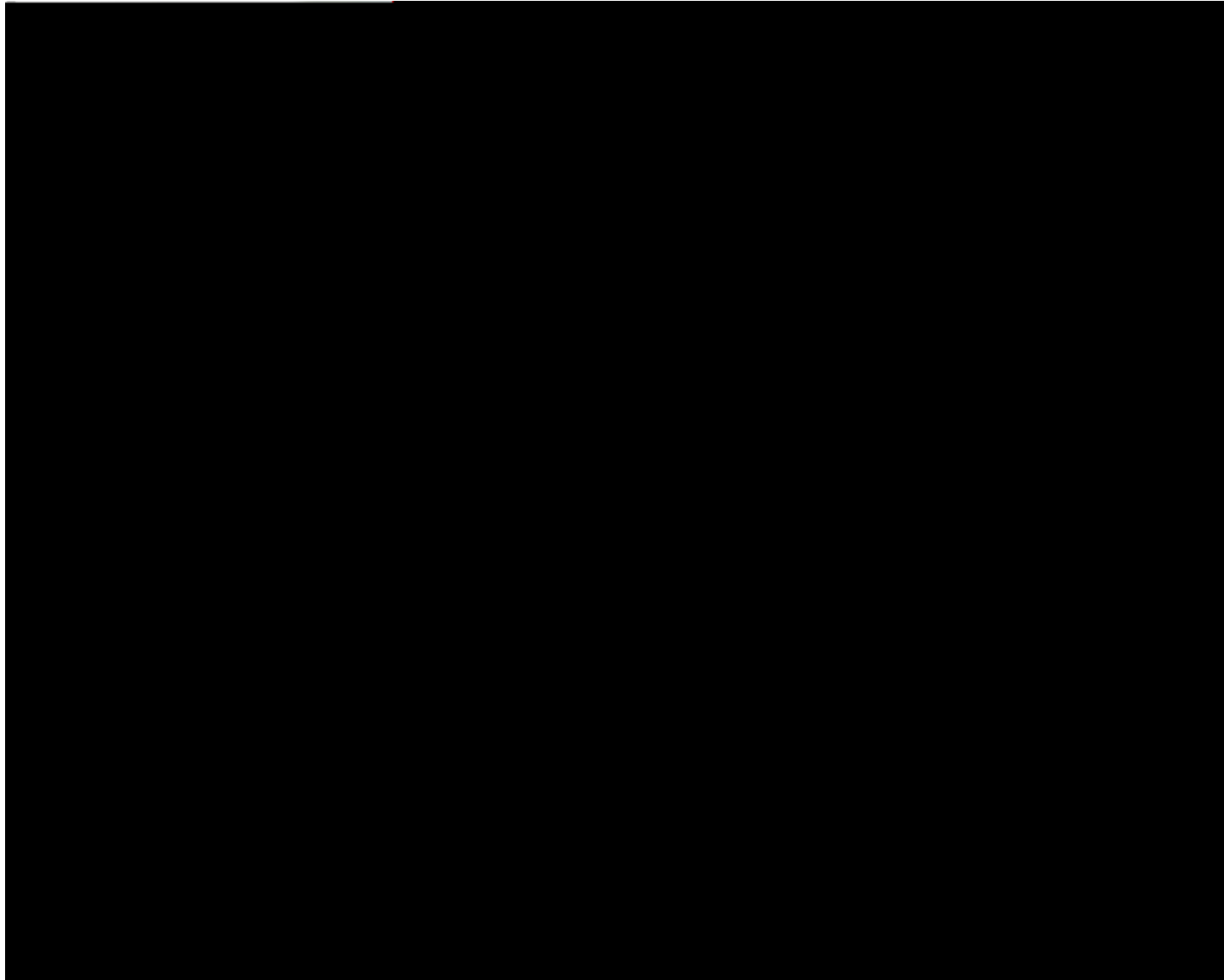
```
clear 192.168.1.1
Ruijie#ping 192.168.1.10
2 seconds: Sending 5, 100-byte ICMP Echoes to 192.168.1.10, timeout is
           < press Ctrl+C to break >
           !!!!!
           Success rate is 100 percent (5/5), round-trip min/avg/max =
Ruijie#copy tftp://192.168.1.10/rgos.bin flash:rgos.bin
Accessing tftp://192.168.1.10/rgos.bin...
Check file success.
Transfer finished. File is 119564384 bytes.
N: RGOS 10.3.*, Release(122172)
main program OK.
FORMATION :
110010
ION: Ruijie EASY GATEWAY<EG1000S> by Ruijie Networks.
OK.
Building configuration...
[OK]
Ruijie#reload
Processed with reload? [no]y_
```

```
THE PROGRAM VERSION
Upgrade Master CM
CURRENT PRODUCT IN
PRODUCT ID: 0x10
PRODUCT DESCRIPT
SUCCESS: UPGRADING
Ruijie#wr
```

sh ver

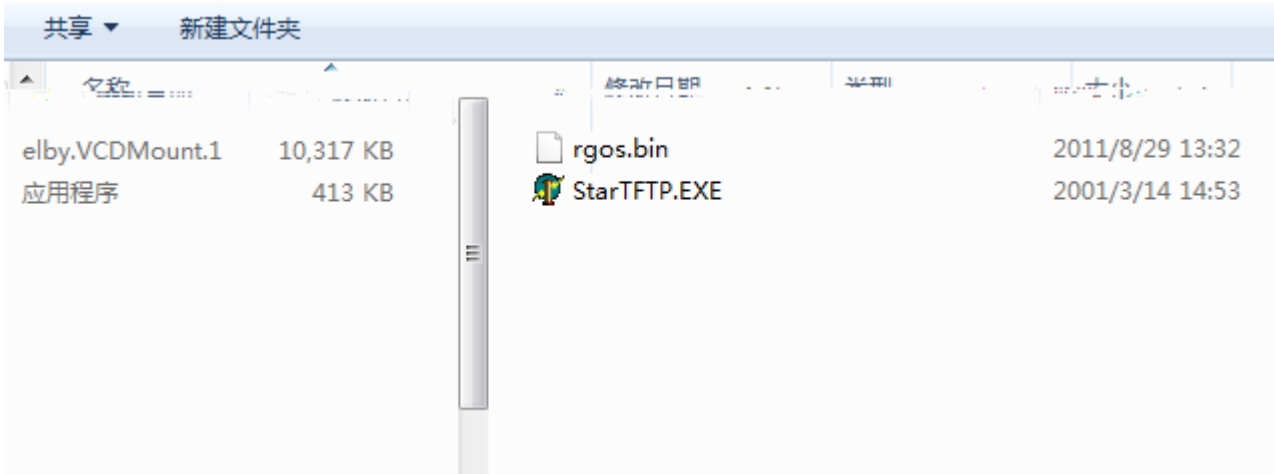


WEB

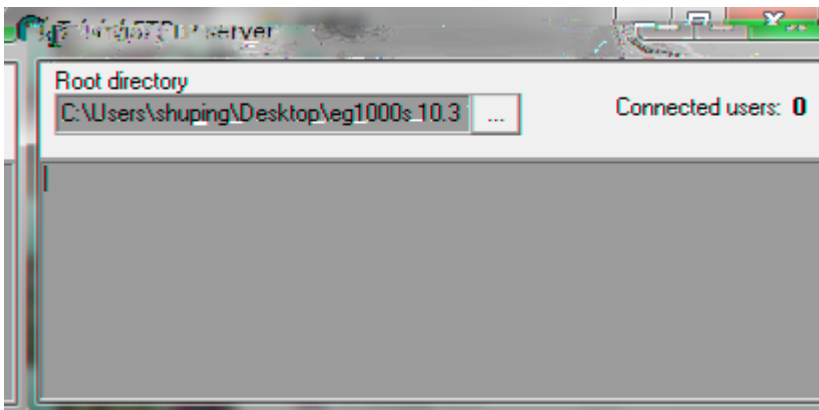


rgos.bin

startftp.exe TFTP



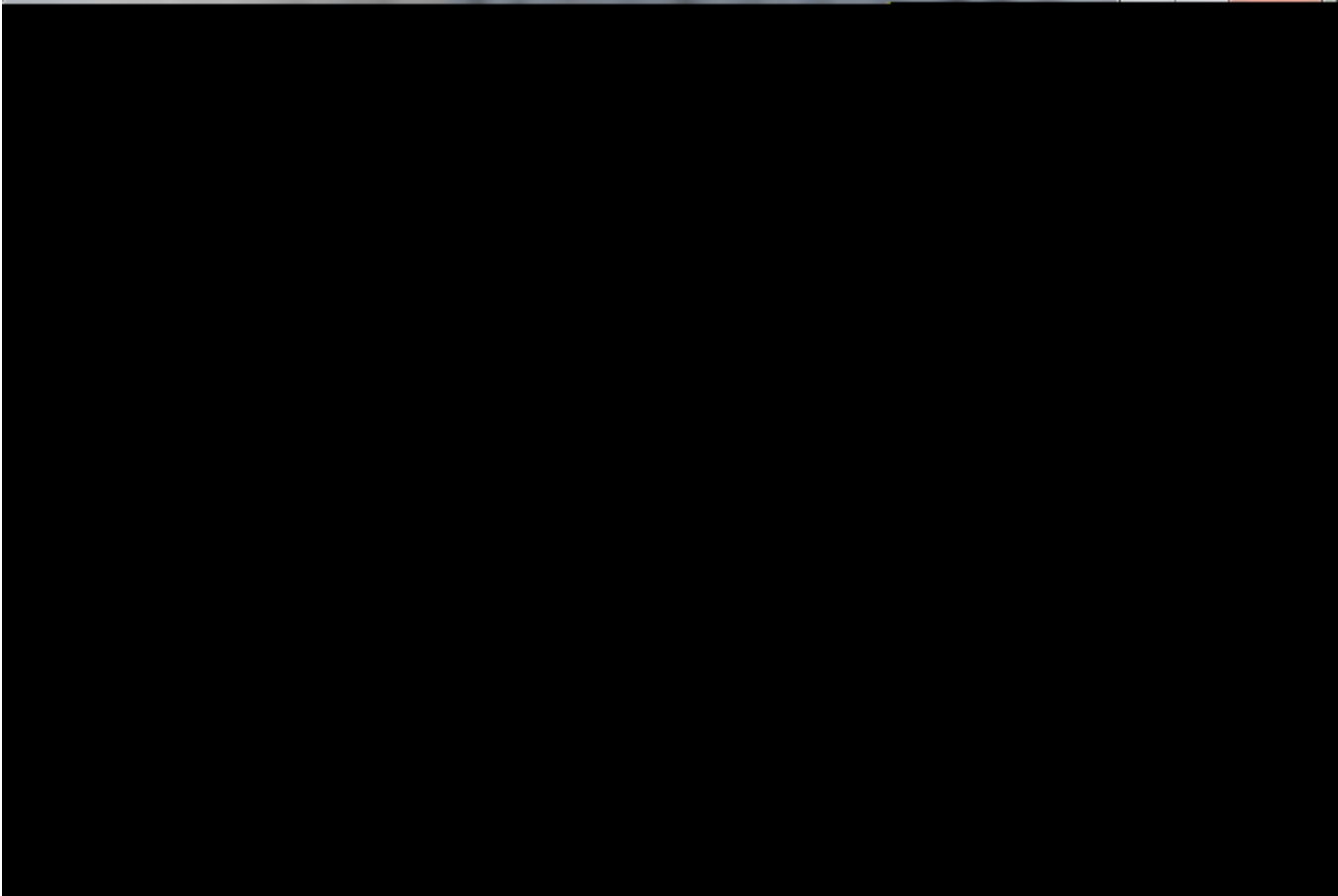
startftp



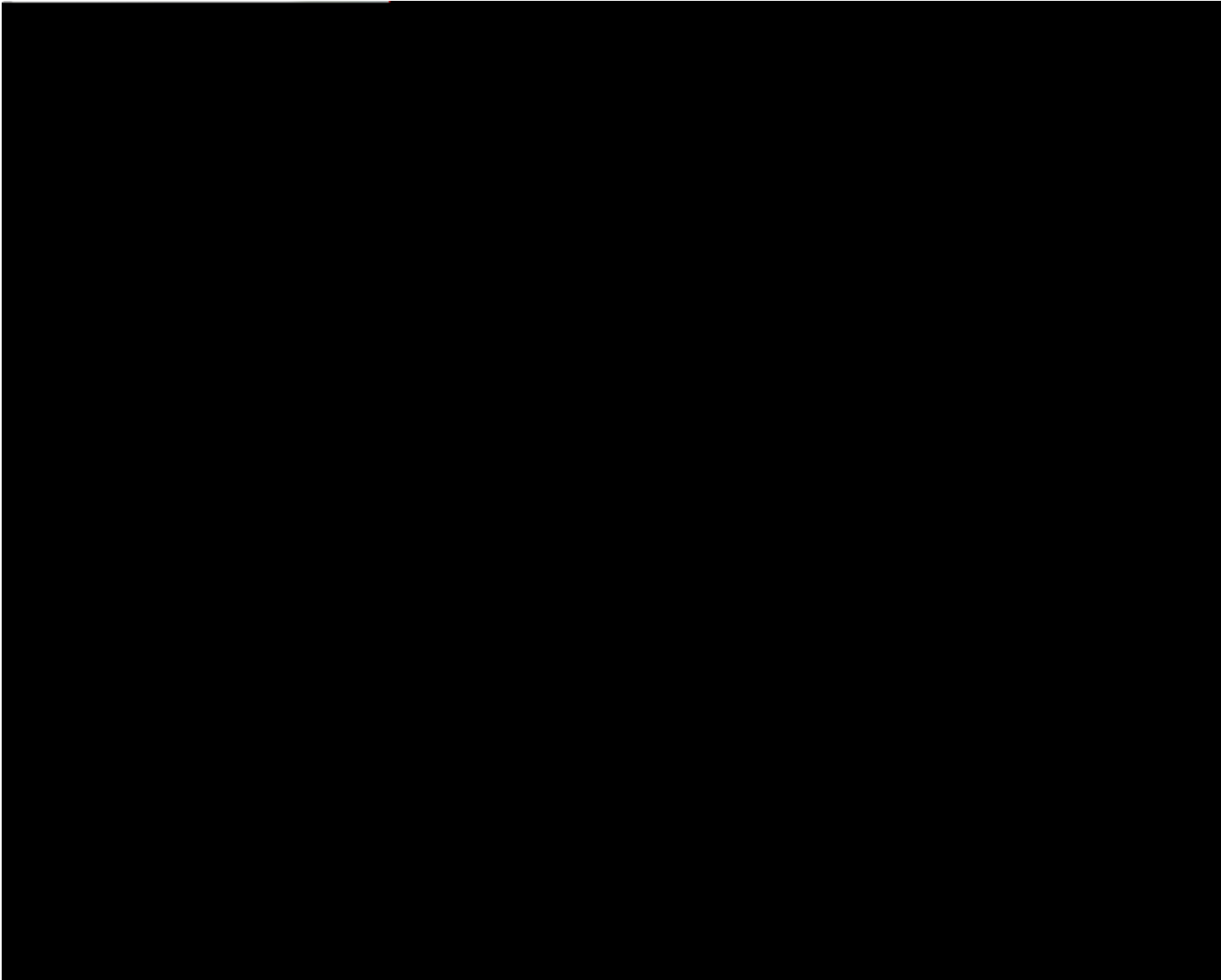
windows

startftp

WR

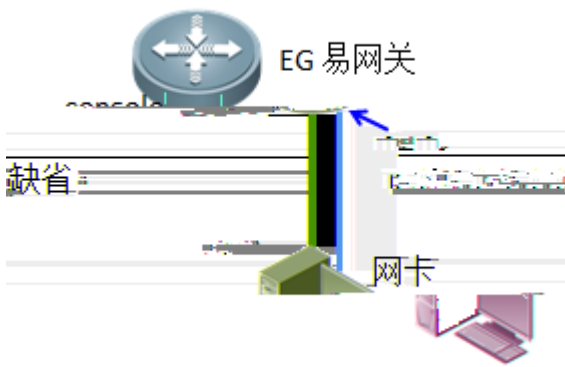


sh ver

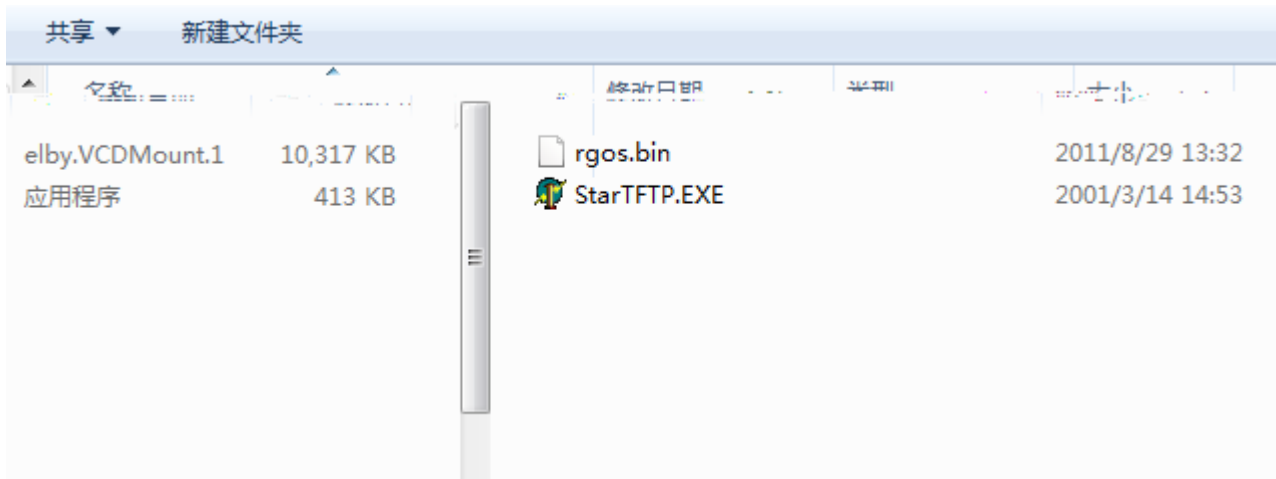


CRTL

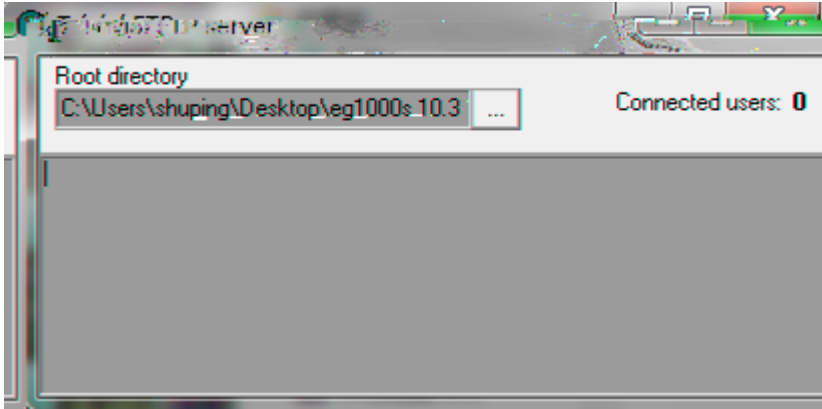
console

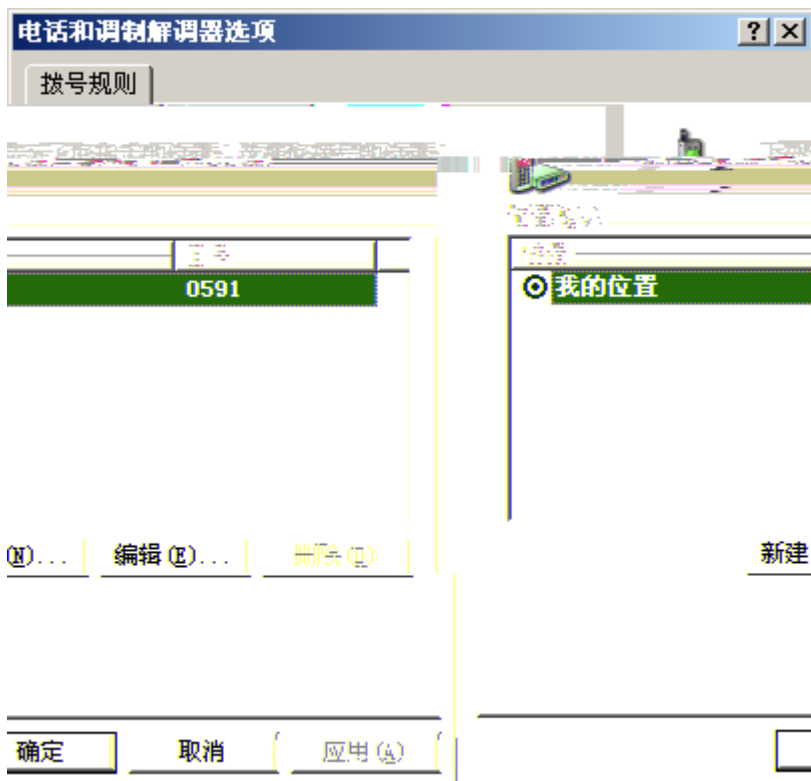
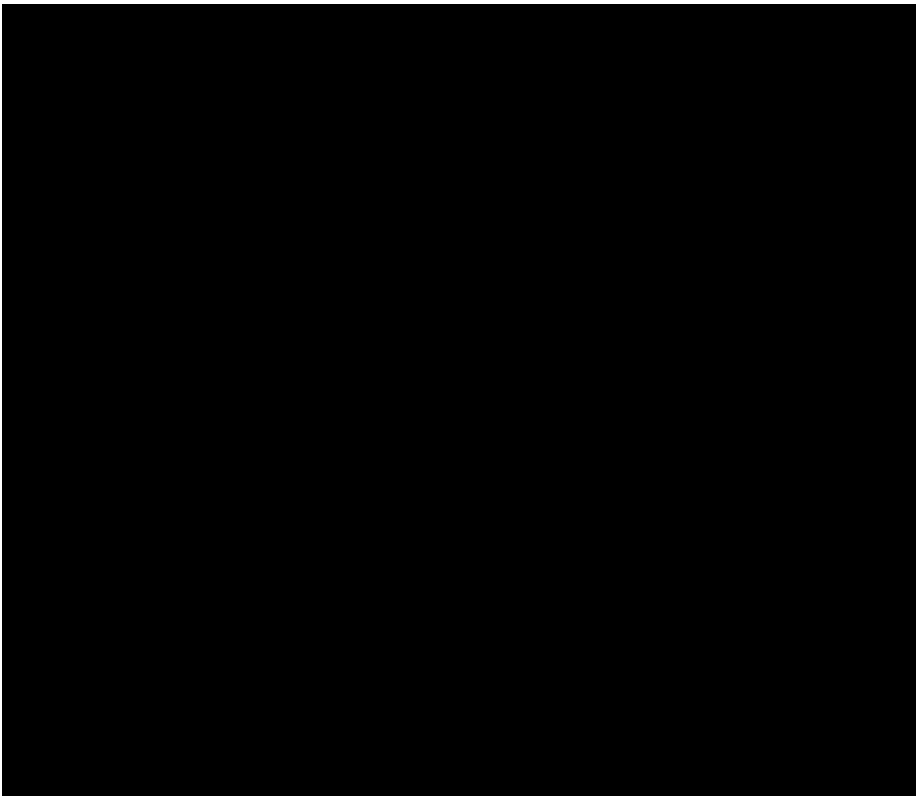


> mgmt



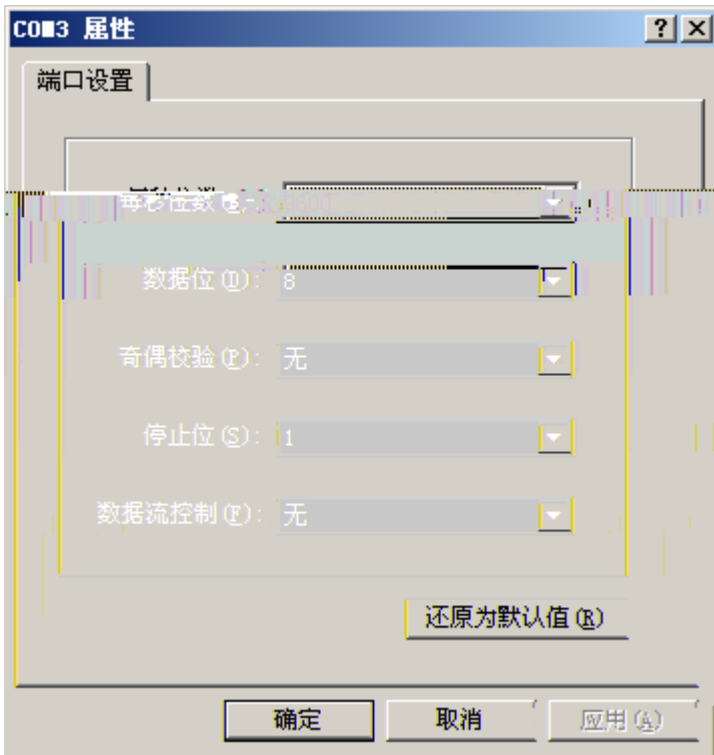
startftp

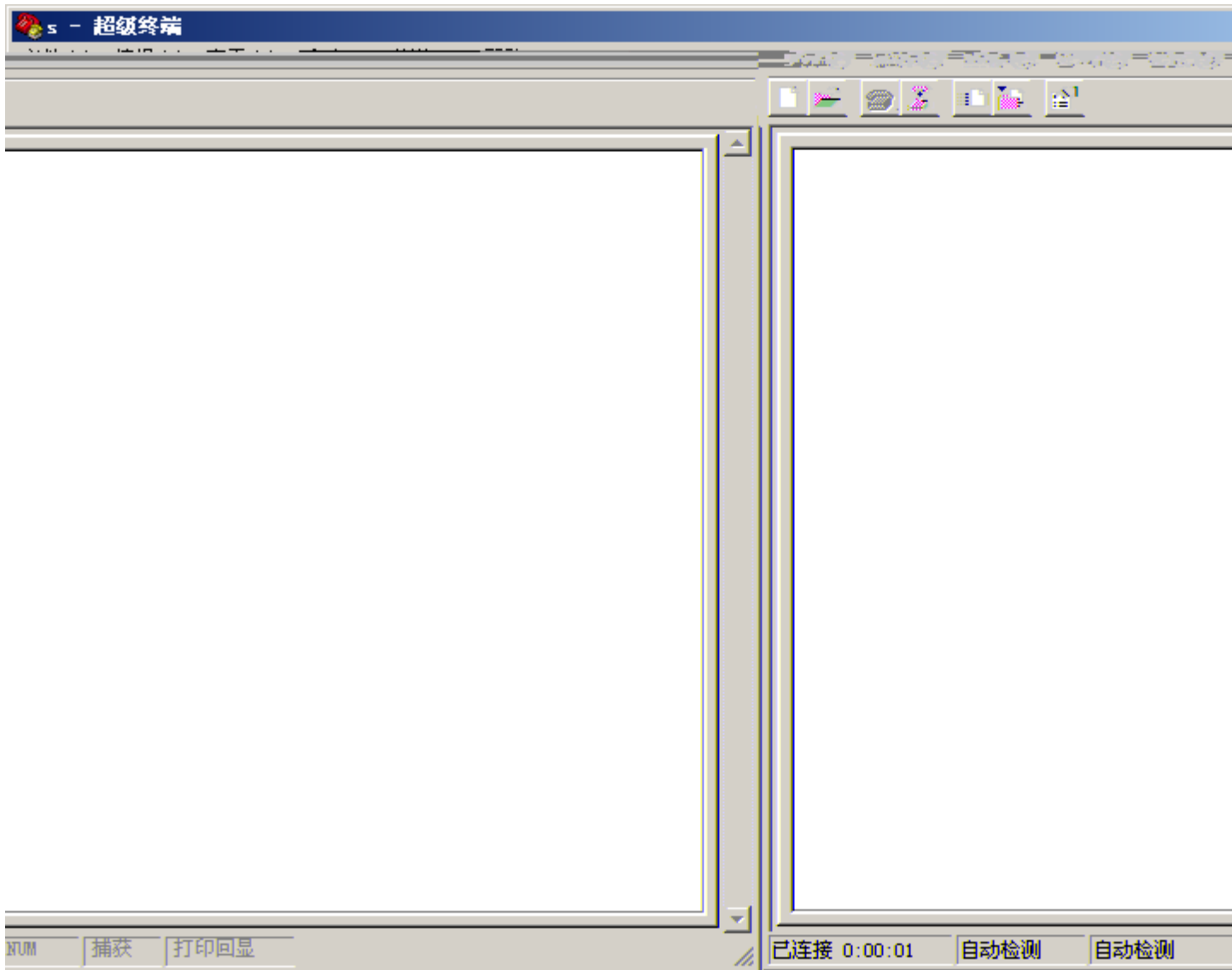






COM

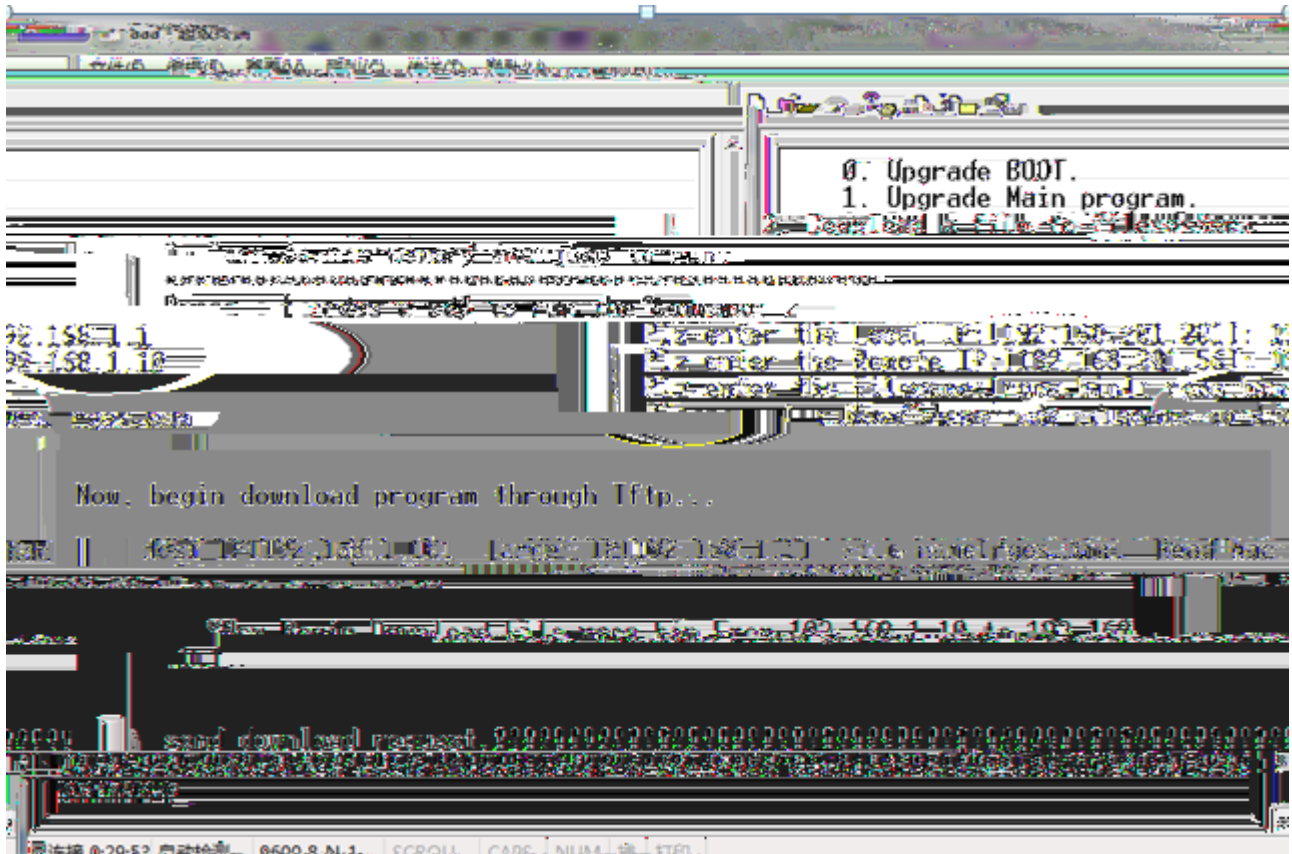




>

<http://ishare.iask.sina.com.cn/f/12091227.html?from=like>

ctrl



3 CTCL+Z

2

