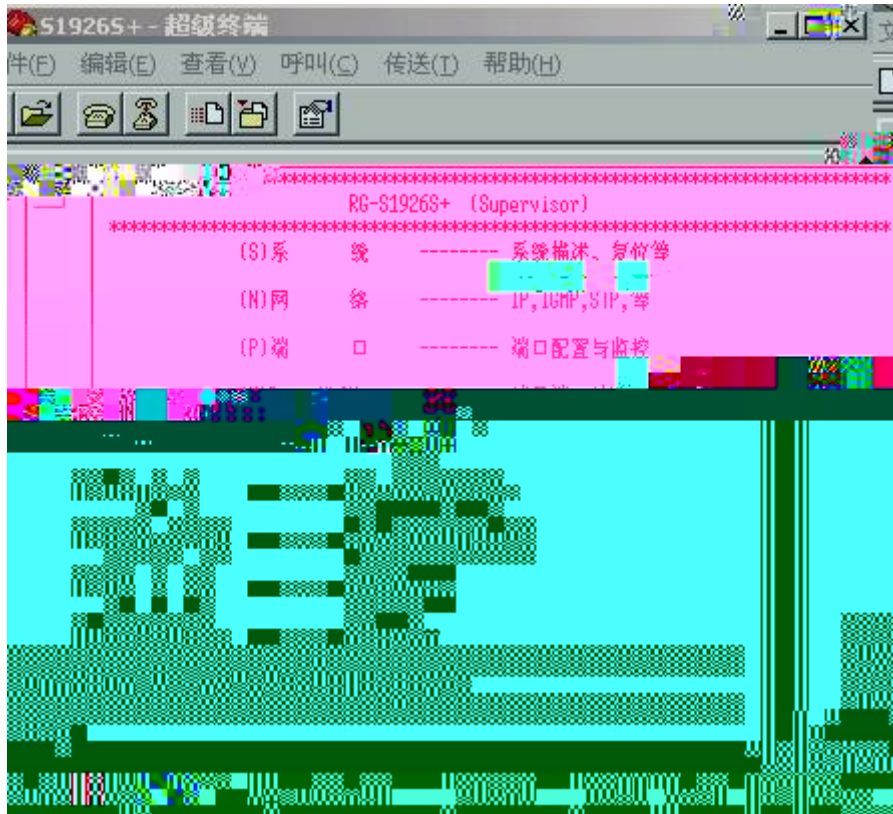
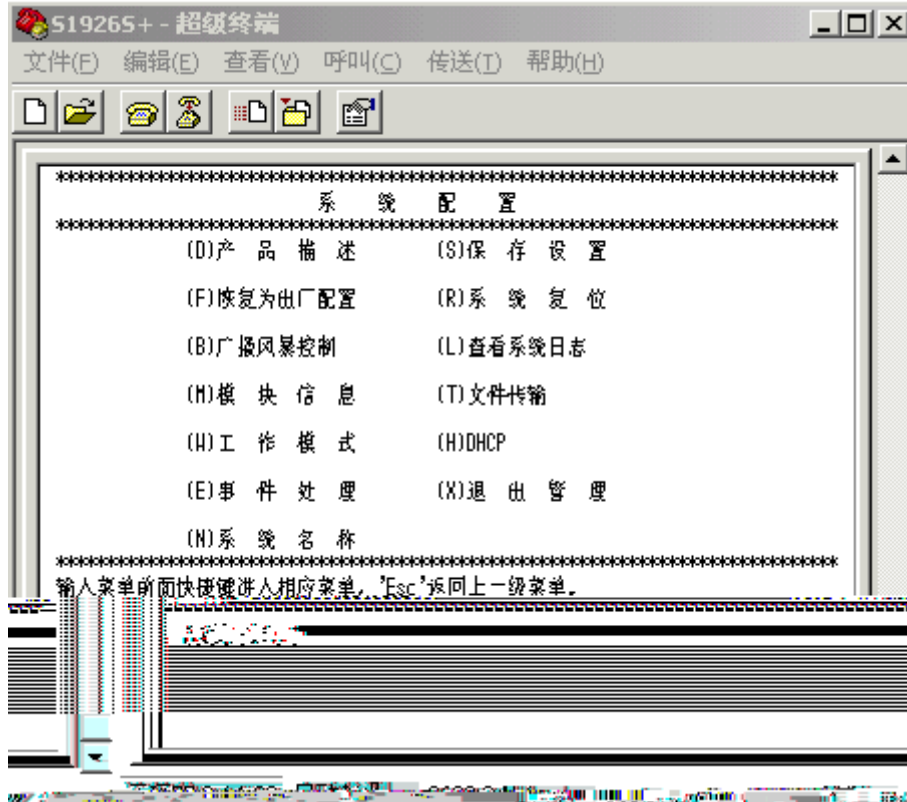


2

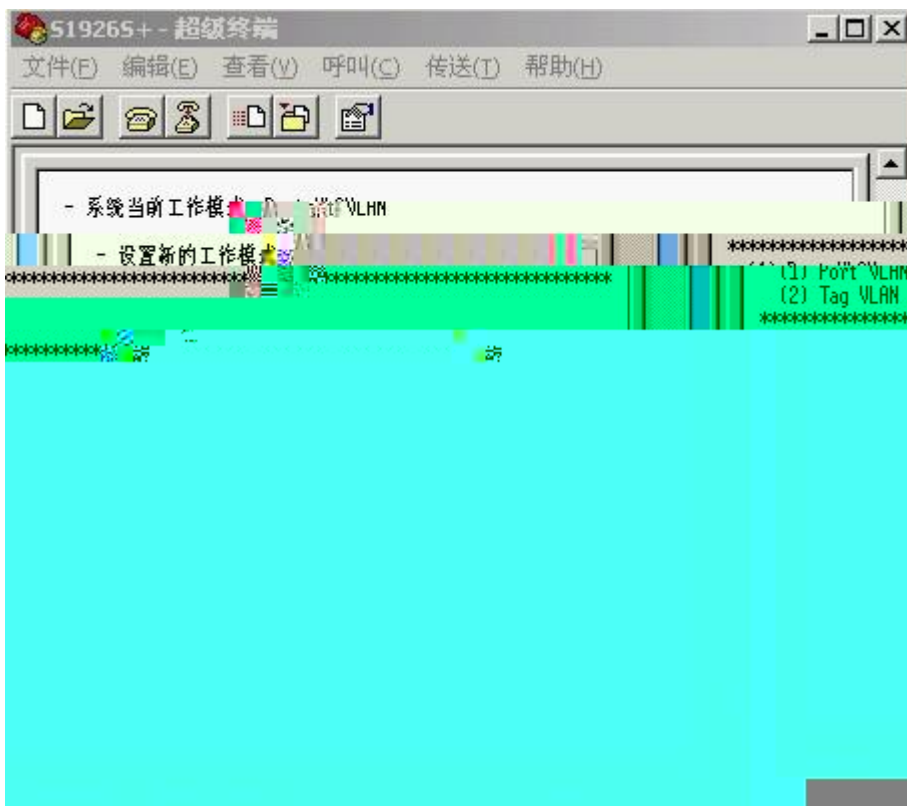
3 GB Chinese 1



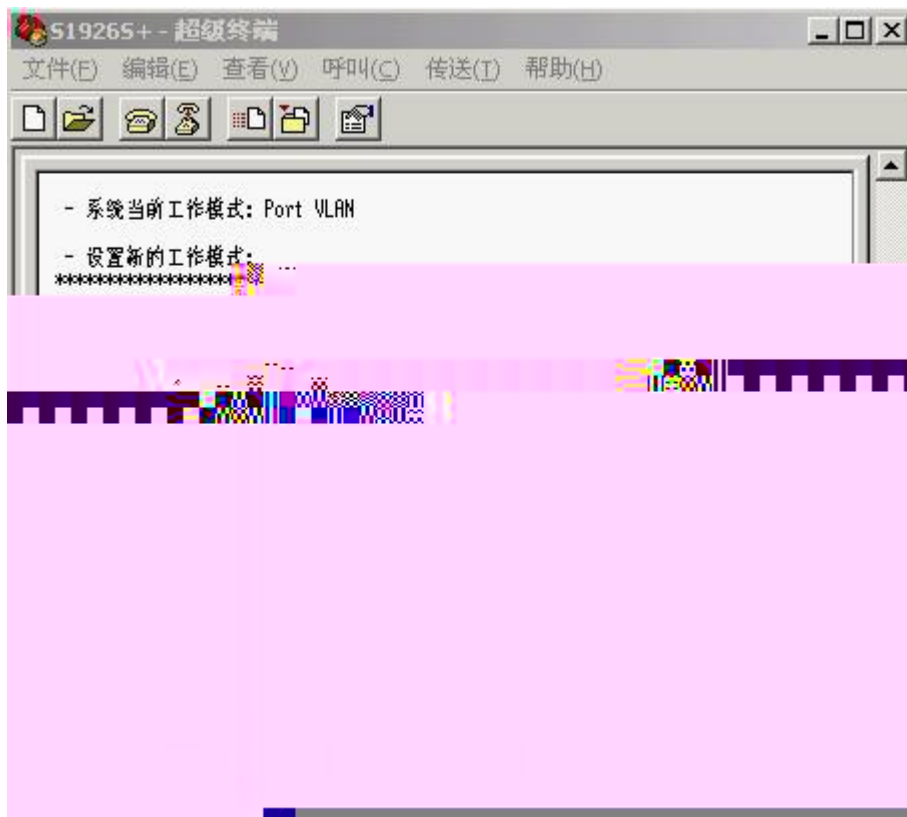
4 (S)



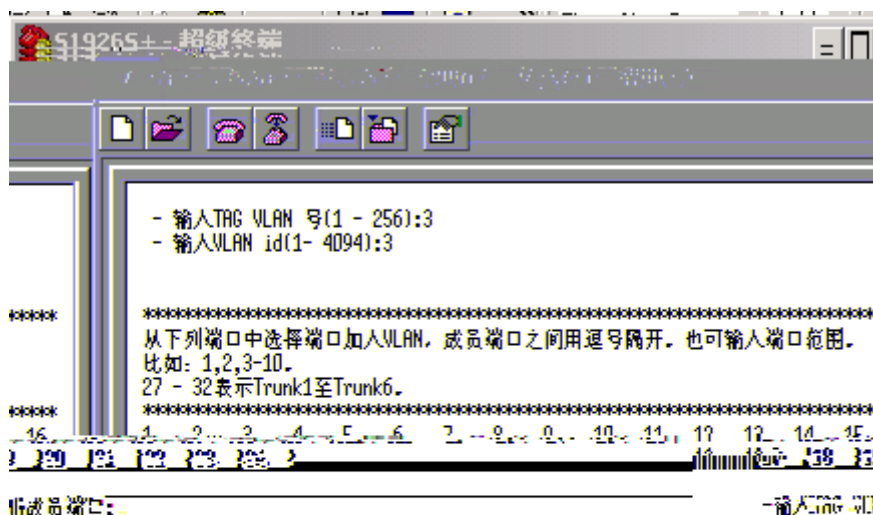
5 (W)



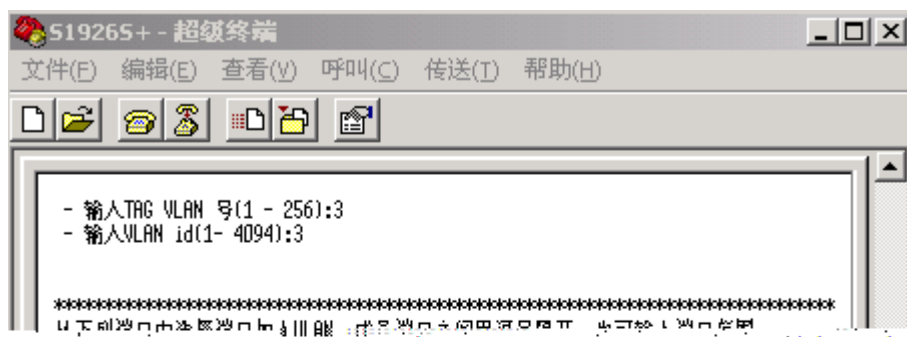
6 2 Tag VLAN



. ESC
VLAN 3 1-24 VLAN 3 2 ,
VLAN TAG CISCO TRUNK
UNTAG (CISCO access)



	自动检测	9600 8-N-1	NUM	连接的 0:11:32
3	TAG VLAN	3,	vlan 3	
4	VLAN id	3,	vlan id 3	vlan vlan id

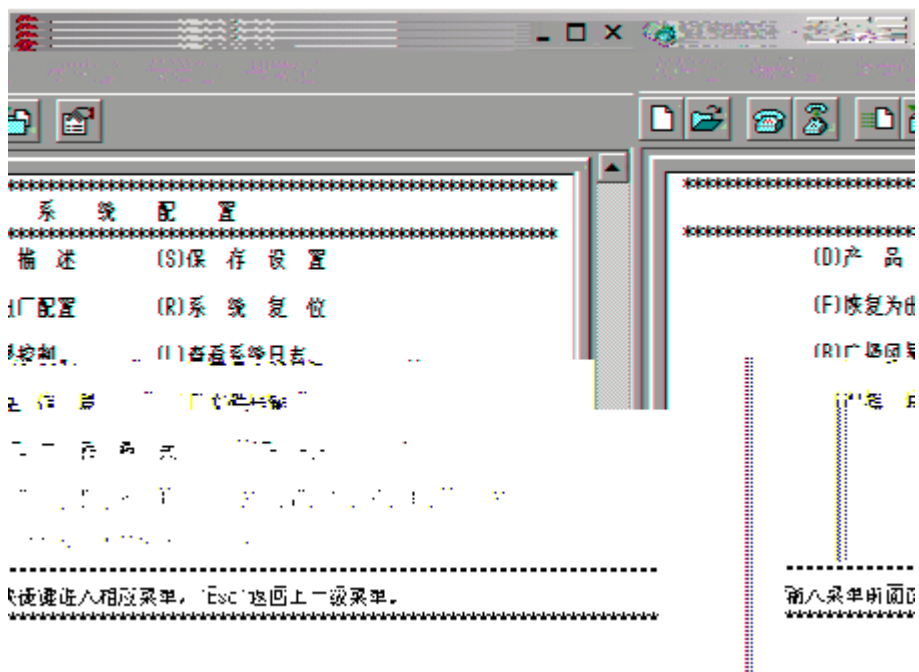


	NUM	连接的 0:14:43
端口:	17, 18, 19, 20	-输入TAG VLAN成员端 1-24
VLAN id为该TAG VLAN的VLAN id?		-修改成员端口的缺省 -(Y/N):y

自动检测 9600 8-N-1 NUM 连接的 0:14:43 自动转

5	VLAN	1-24	1-24	5v
---	------	------	------	----

11 S

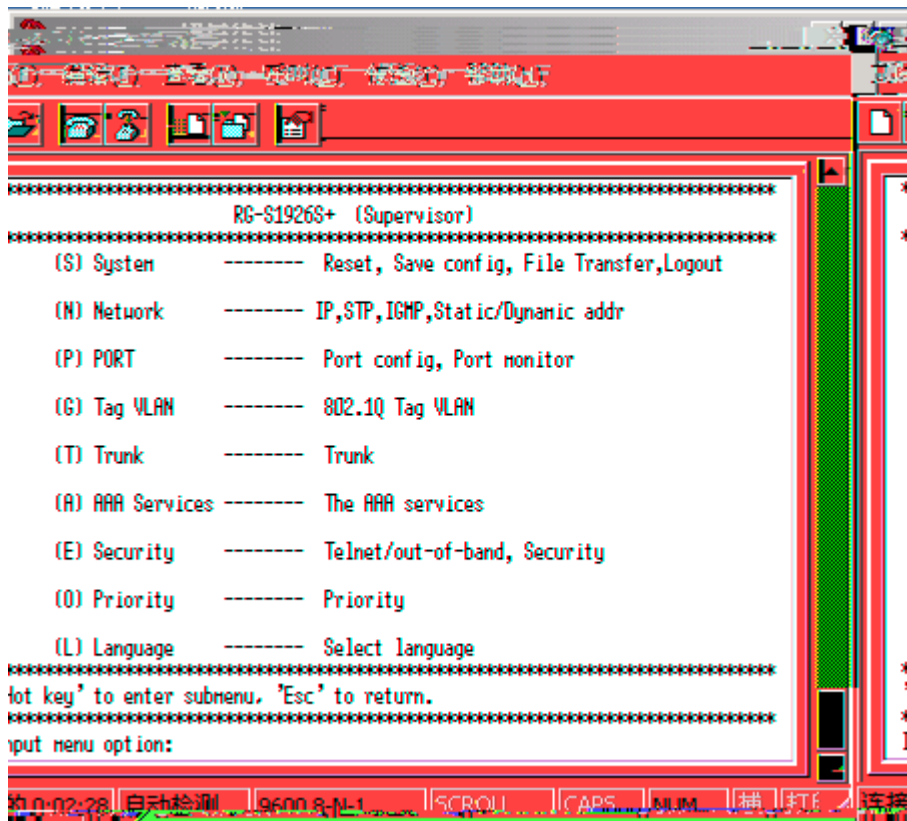


12 S

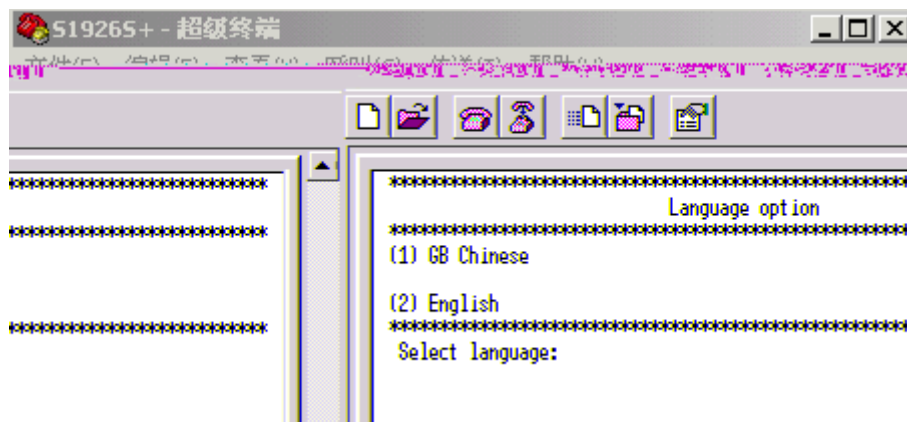
S1926S+ IP



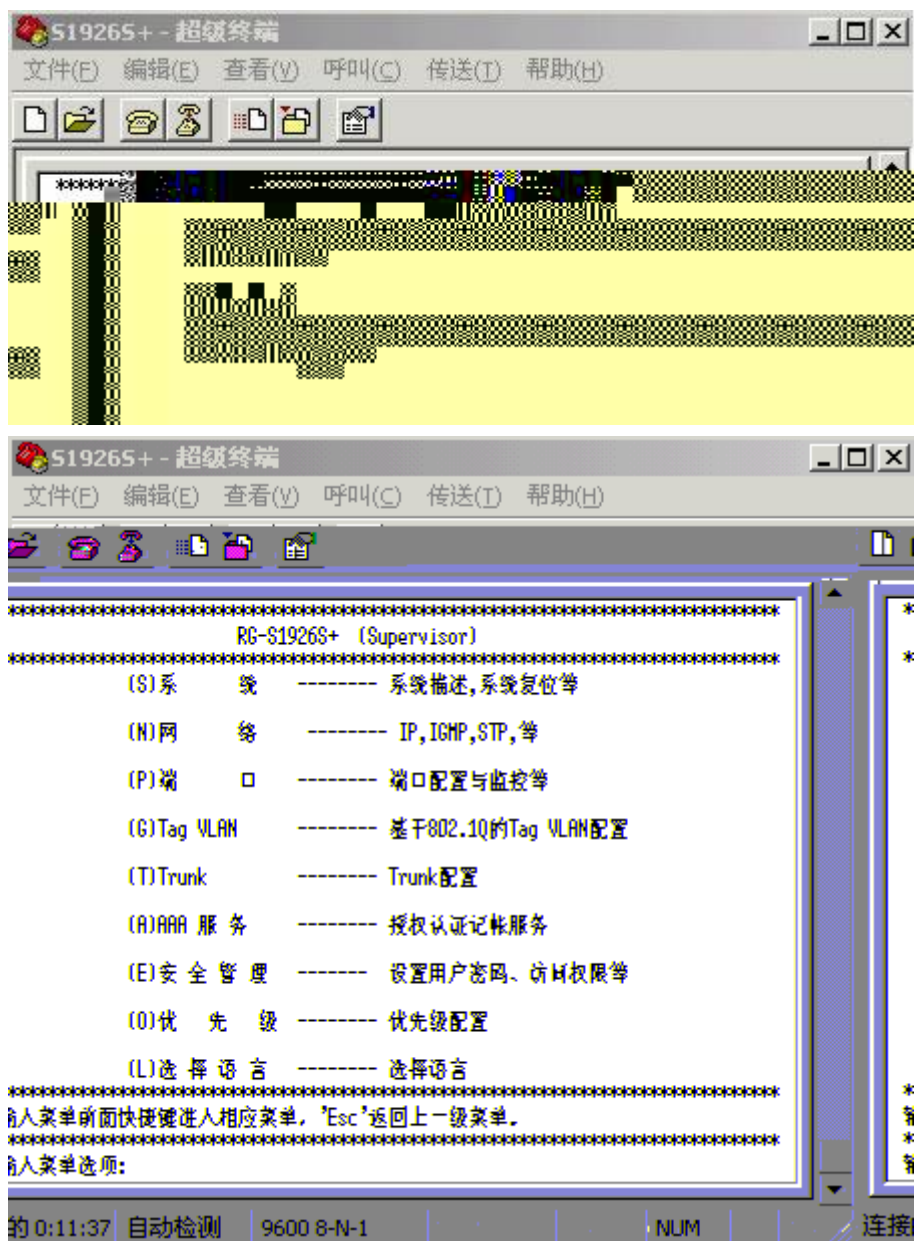
1 /



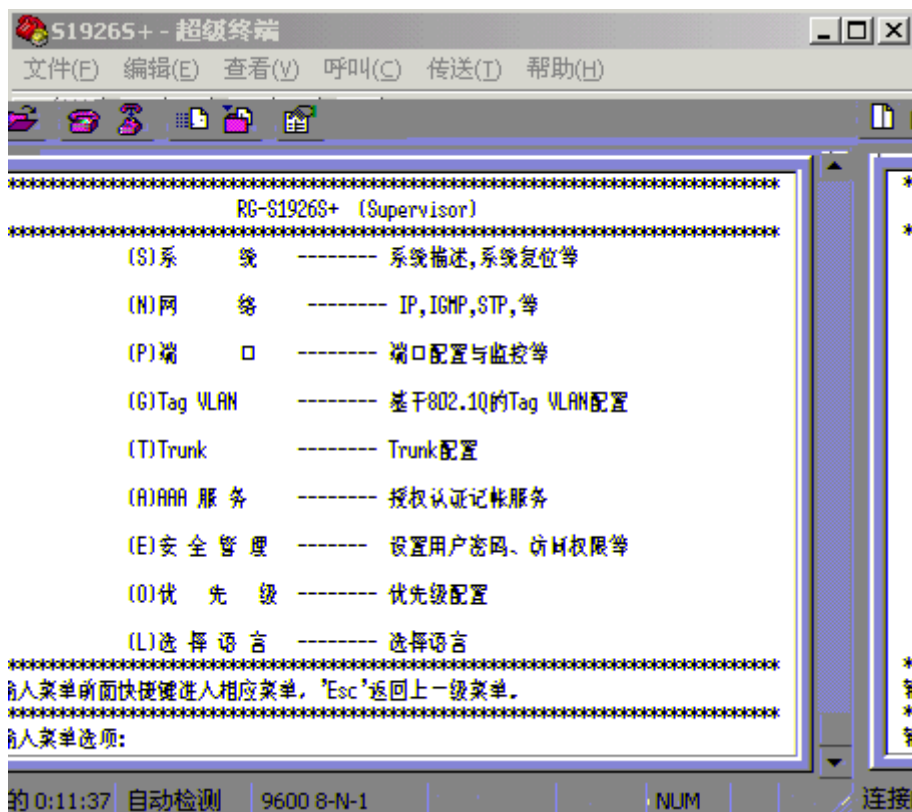
2 L



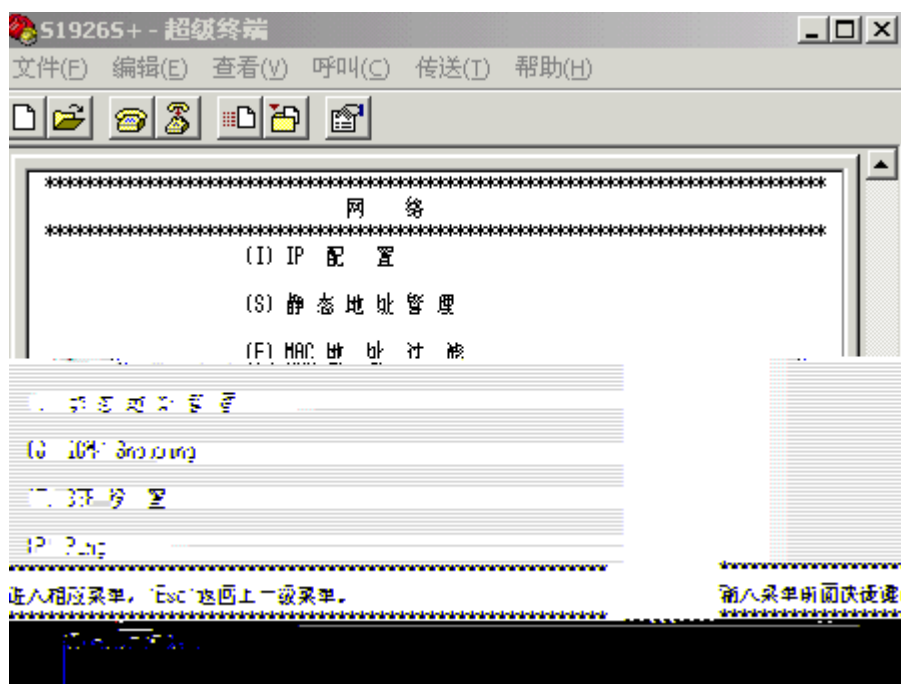
3 GB Chinese 1



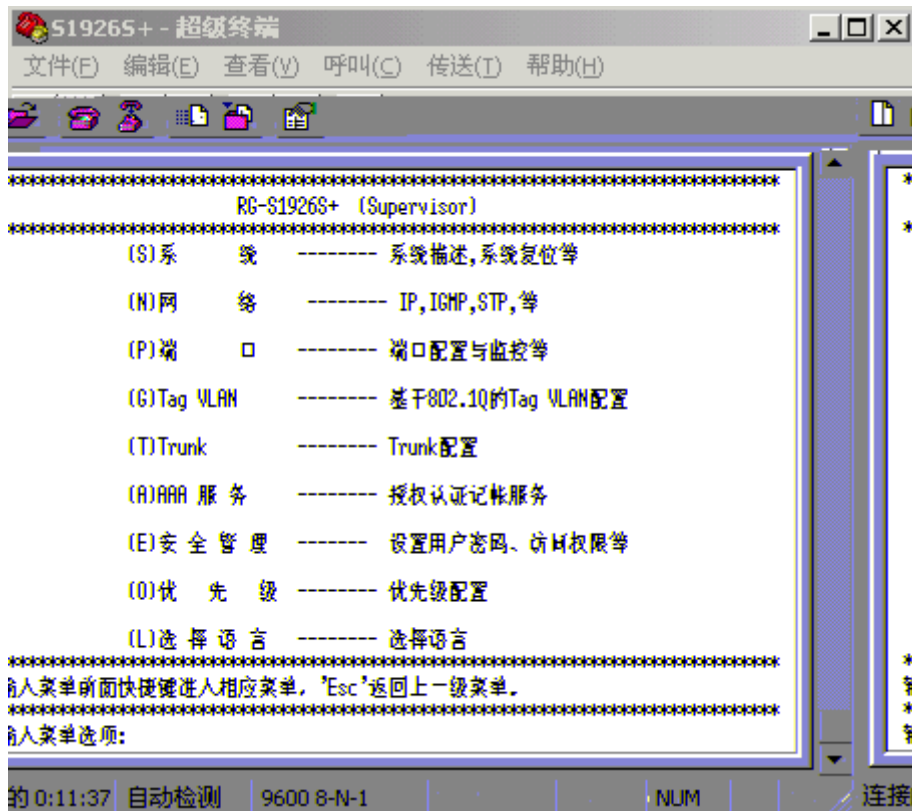
IP



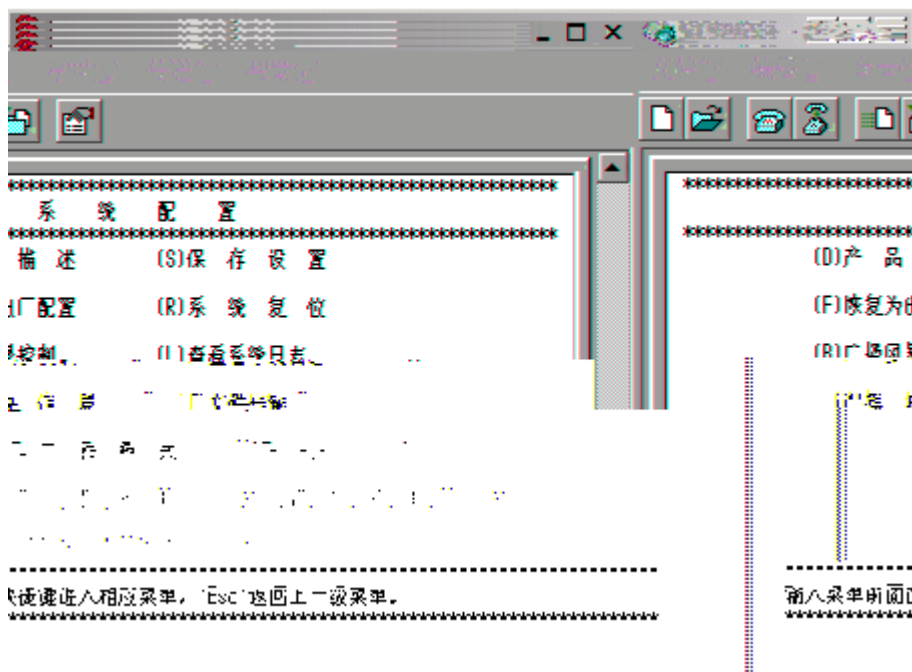
1 N



2 I IP



6 S



7 S

