

Ruijie

□

©2021



RGOS®

RGNOS®

<http://www.ruijie.com.cn/>

<http://webchat.ruijie.com.cn>

<http://www.ruijie.com.cn/service.aspx>

7× 24

4008-111-000

4008111000@ruijie.com.cn

1

RG-WALL 1600-X9500

IPSec SSL VPN Web
IPv4 IPv6 NAC SSL

RG-WALL 1600-X9500

RG-WALL 1600-X9500

1.1 RG-WALL 1600-X9500

 RG-



RG-WALL 1600-X9500

1-2

1-2 RG-WALL 1600-X9500



2

2.1

RG-WALL 1600-X9500

2.1.1

2.1.2

2.1.3

2.1.4

RG-WALL 1600-X9500

RG-WALL 1600-X9500

1~10

" 3.8

2.1.5

RG-WALL 1600-X9500

2.2

RG-WALL 1600-X9500

2.2.1

RG-WALL 1600-X9500

RG-WALL 1600-X9500

RG-WALL 1600-X9500

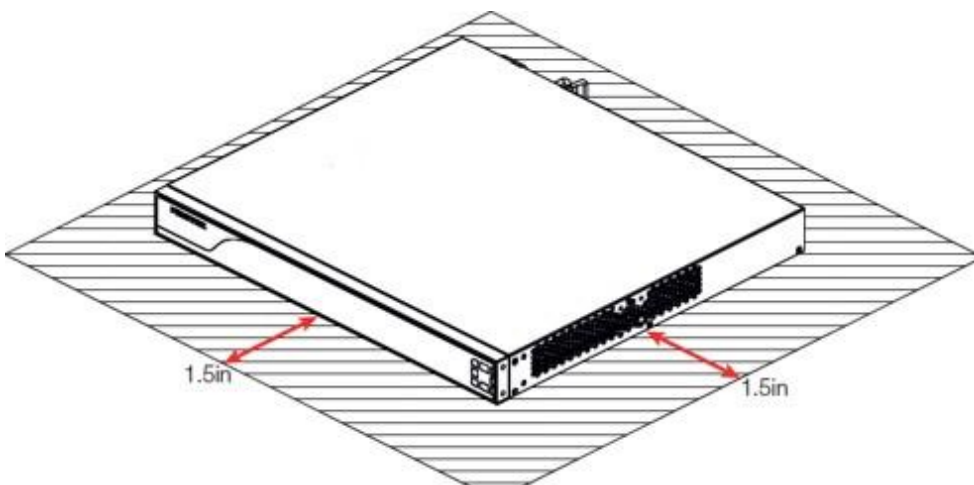
2.2.2

RG-WALL 1600-X9500

2-2 2-3

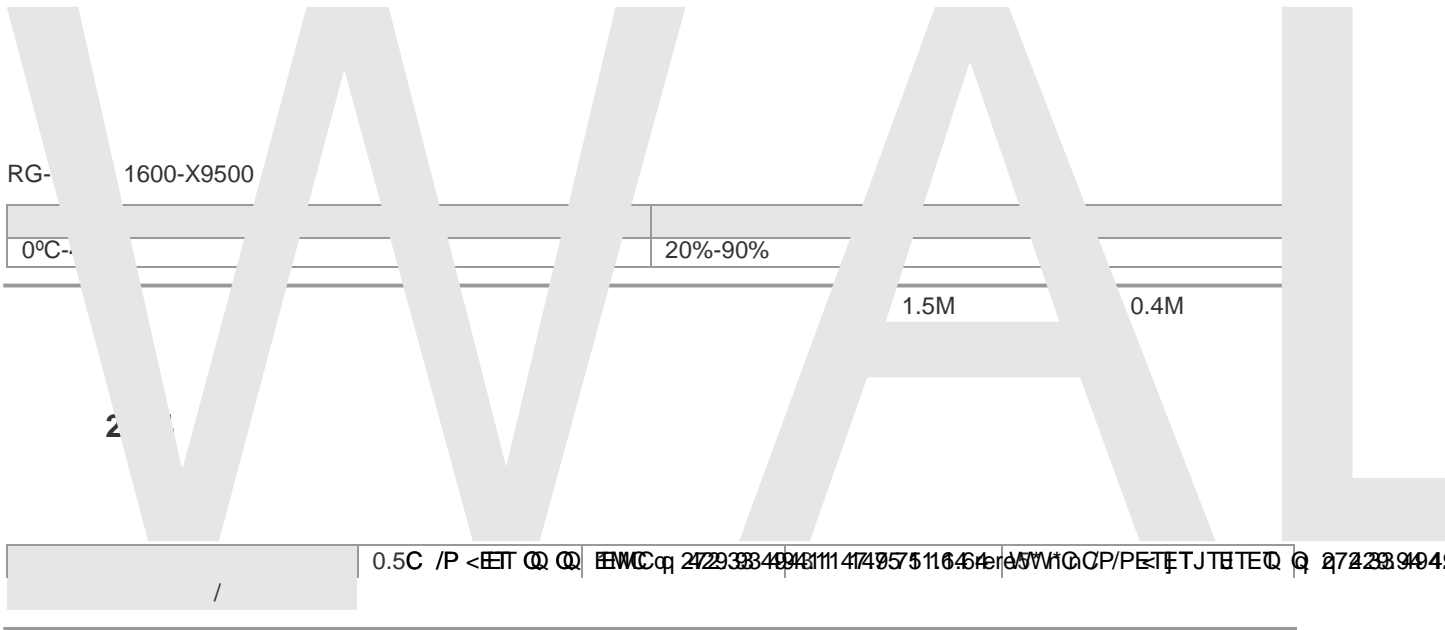
3.8cm

2-1 RG-WALL 1600-X9500



2.2.3

RG-WALL 1600-X9500 T /10 BT 1 0 0 1 120.26 642.40 TJ463 0.T /10 BT 1 0 0 1 123.26 642.34 Tm [(X)14(9)-30.4M165 50



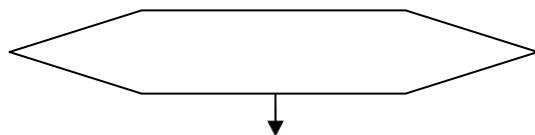
2.2.7 EMI

2.3

2.4

	# "

--	--



3.3

5mm

1.5cm

- 1)
- 2)
- 3)
- 4)

IEC60297 19
1RU=44.45mm(1.75inch) 1RU 3-1

RU Rack Unit

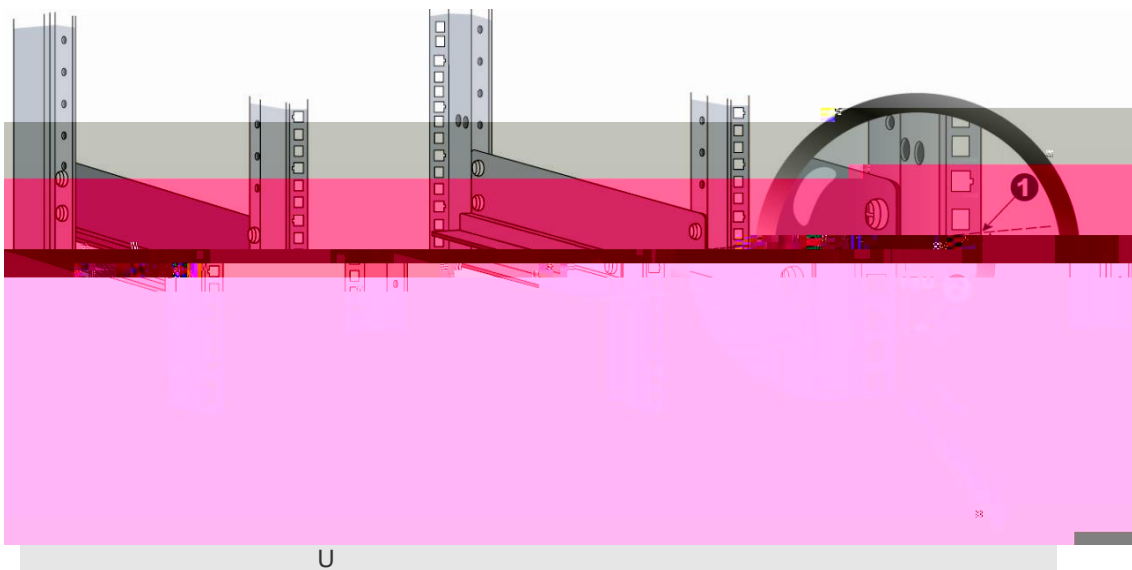
RG- WALL

1600-X9500

RU

U

3-1



RG-WALL 1600-X9500

RG-WALL 1600-X9500

3.4

RG-WALL 1600-X9500

10mm

- 1) RG-WALL 1600-X9500
- 2) RG-WALL 1600-X9500
- 3) RG-WALL 1600-X9500 RG-WALL 1600-X9500

3.5

16A

- 1)
- 2)

- 1) RJ45
- 2) RJ45
- 3) RJ45
- 4)

3.7

- 1)
- 2)
- 3)

3.8

3.9

SFP

SFP

SFP

4)

5)

SFP

6) 3-7

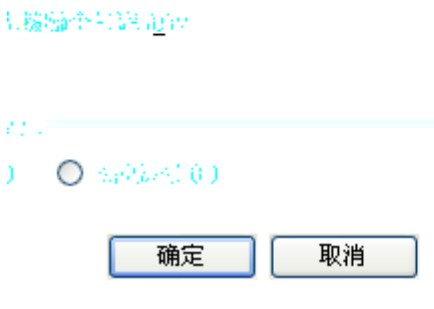
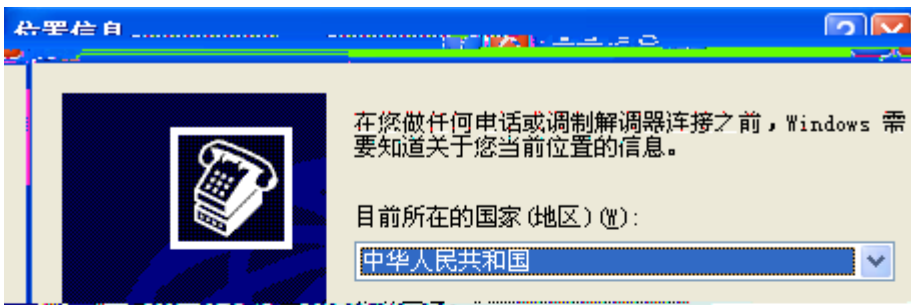
- 1.
- 2. SFP
- 3.
- 4. SFP

4

4.1

PC	Console				
1)	DB-9			PC	
2)	RJ45		Console		
	PC	PC	Windows3.1	Terminal	Windows 95/98/NT/2000/XP
			9600	8	1
1)	-	-	-	-	4-2

4-1



2)

4-2



4-3

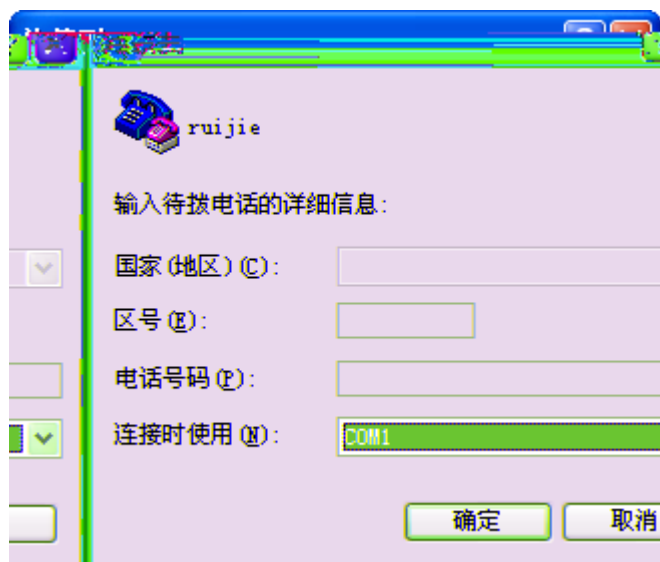


3)

< >

4-4

4-3



4)

8

< >

1

4-5

9600

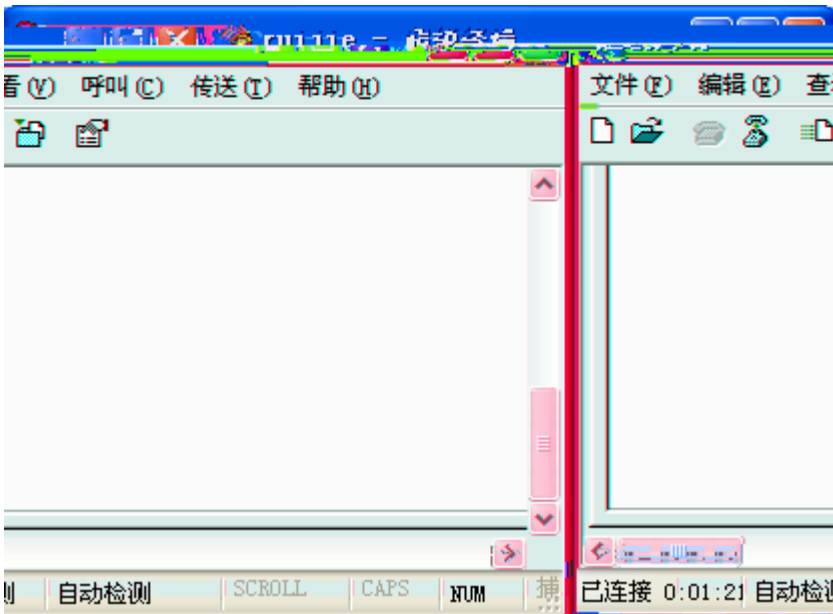
4-4



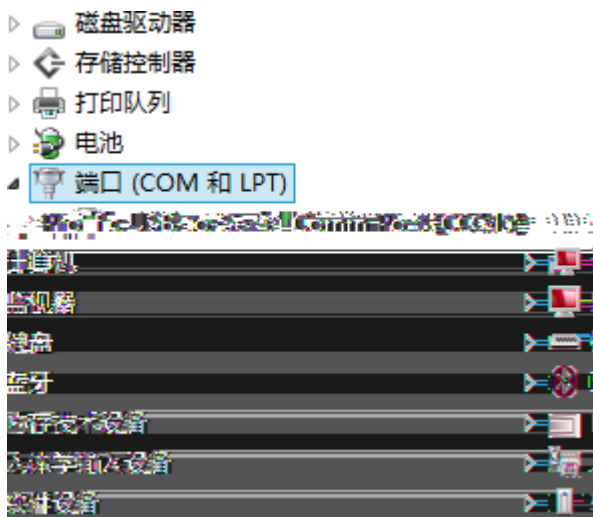
5)

< >

4-6



USB	PC	Console	SecureCRT	Console
USB	Console	USB	Console	Console
	PC		" "	COM
	4-7		" "	LPT
			" "	COM



9600

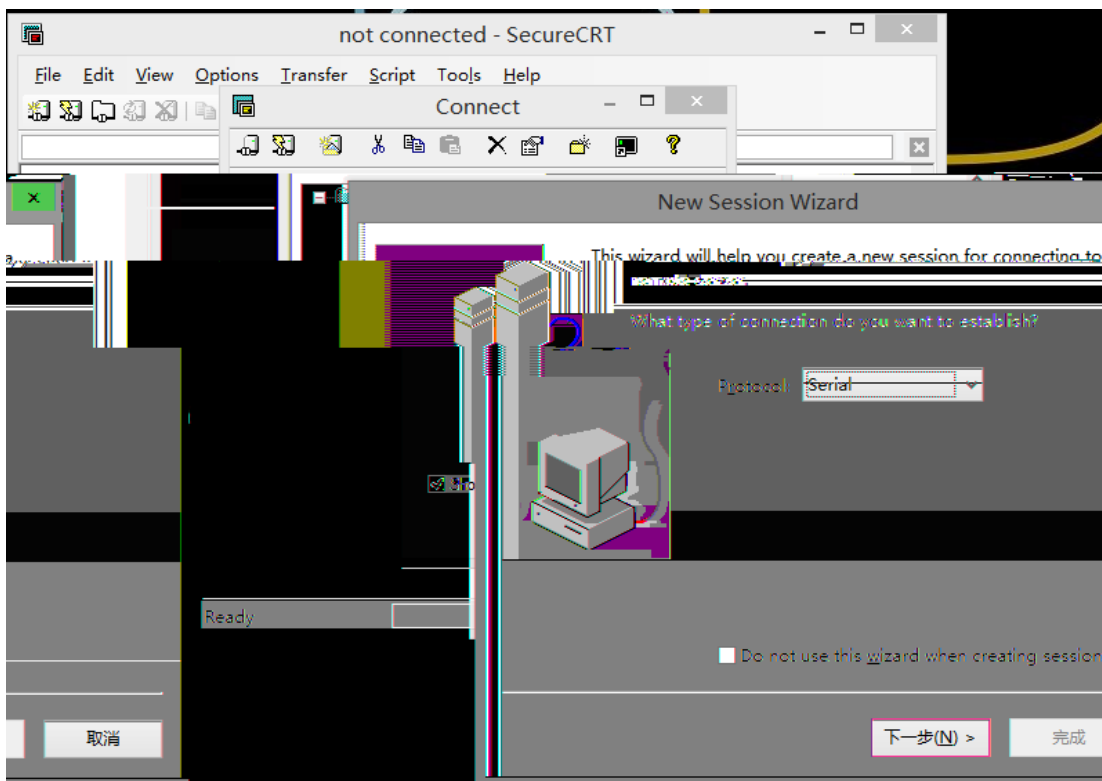
8

1

1) i - Connect Connect

- sess

4-8



4-8

2)

4-9

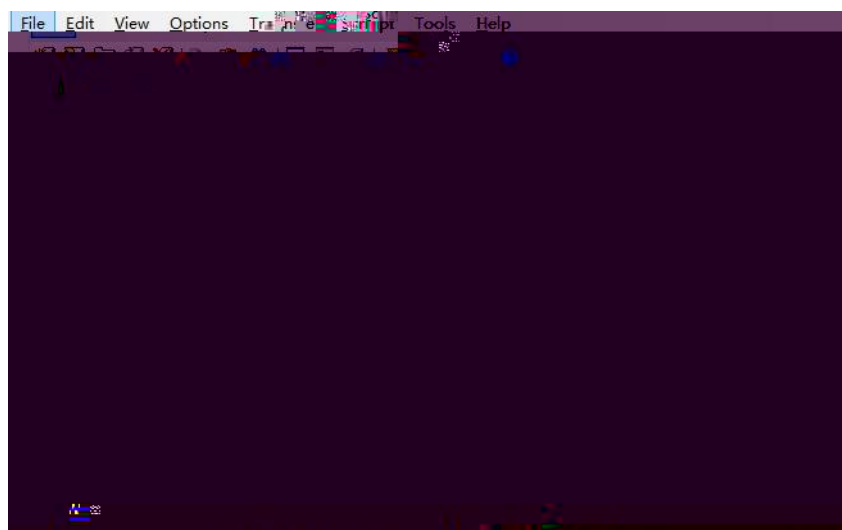
4-9

4-10

4)

< >

4-11



4-11

4.2

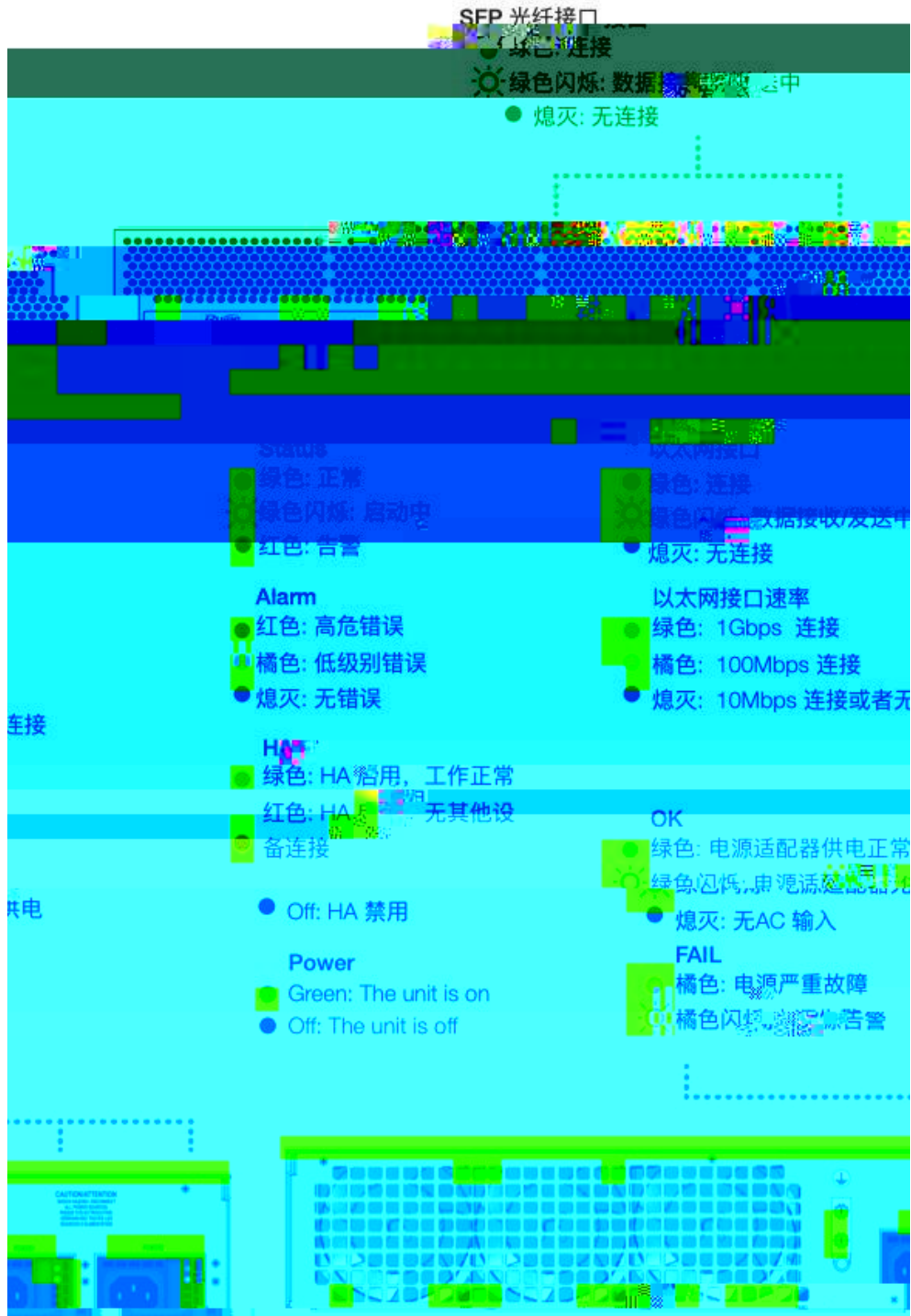
PC

5

5.1

RG-WALL 1600-X9500

5-1 RG-WALL 1600-X9500



RG-WALL 1600-X9500

RG-WALL 1600-X9500

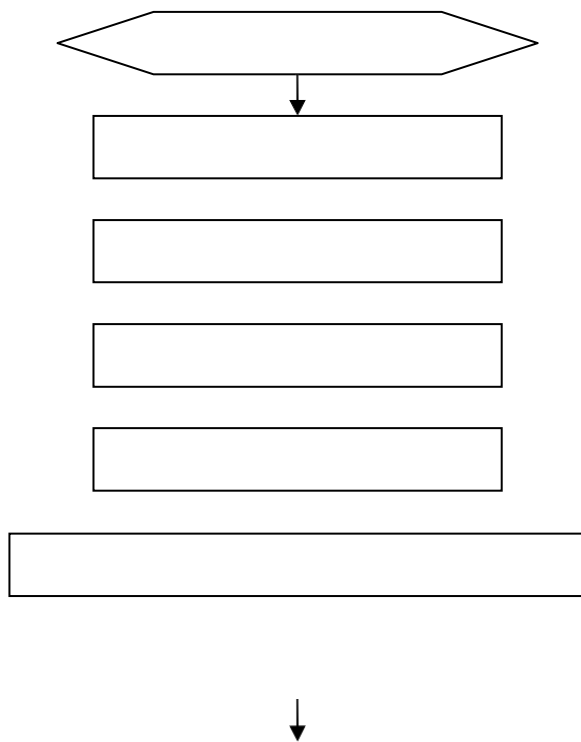
RG-WALL 1600-X9500 Internet

Telnet

RG-WALL 1600-X9500

RG-WALL 1600-X9500

5.2



4

Ⓜ Ⓜ

5

A

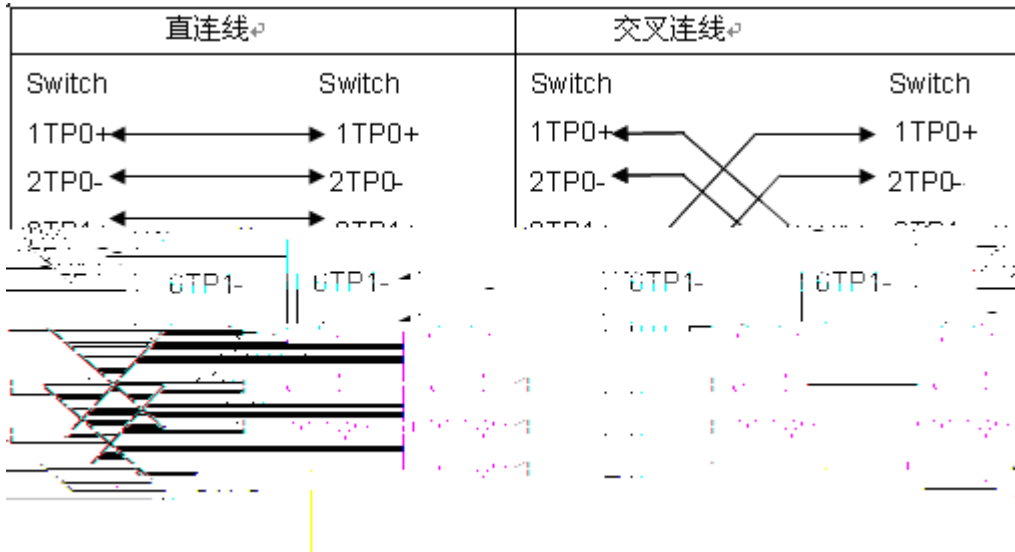
1000BASE-T/100BASE-TX/10BASE-T

1000BASE-T/100BASE-TX/10BASE-T

MDI/MDIX Crossover

1000BASE-T IEEE 802.3ab 100 1000BASE-T 4 100-ohm 5 5 4 UTP 4 STP 1000BASE-T

A-1 1000BASE-T



100BASE-TX/10BASE-T 100-ohm 5 100

10Mbps 100-ohm 3,4,5 100BASE-TX/10BASE-T

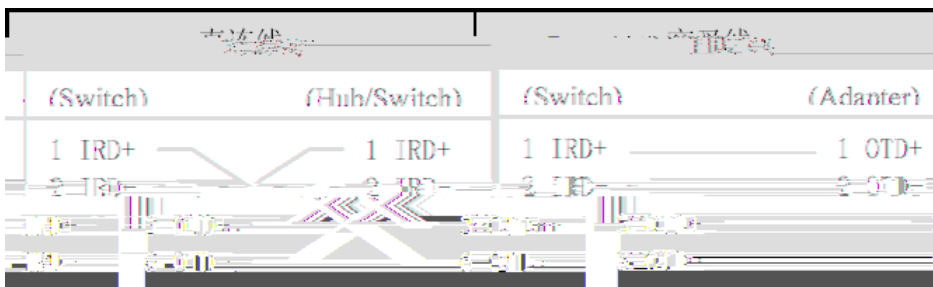
100Mbps

A-2 100BASE-TX/10BASE-T

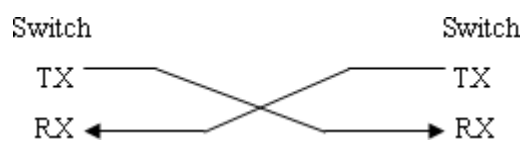
Pin	插座	插头
1	Input Receive Data+	Output Transmit Data+
2	Input Receive Data-	Output Transmit Data-
3	Control/Transmit Data/Receive Data	Control/Transmit Data/Receive Data
4	Control/Transmit Data/Receive Data	Control/Transmit Data/Receive Data
5	Control/Transmit Data/Receive Data	Control/Transmit Data/Receive Data
6	Control/Transmit Data/Receive Data	Control/Transmit Data/Receive Data
7	Control/Transmit Data/Receive Data	Control/Transmit Data/Receive Data
8	Control/Transmit Data/Receive Data	Control/Transmit Data/Receive Data

100BASE-TX/10BASE-T

A-3 100BASE-TX/10BASE-T



A 4



B

RG-WALL 1600-X9500

19

7

5

7

10

SFP+

5

10

25

20

10

D-1

D-1

D-3

íPD-3

((

(

