



RG-WALL 1600-X8600

V1.2



©2014

&

7× 24

<http://www.ruijie.com.cn/>

<http://webchat.ruijie.com.cn>

<http://www.ruijie.com.cn/service.aspx>

4008-111-000

<http://support.ruijie.com.cn>

[service@ruijie.com.cn](mailto:service@ruijie.com.cn)

# 1

RG-WALL 1600-X8600			20Gbps
8 SFP RJ 45			
	RG-WALL 1600-X8600	128G	WAN

RG-WALL 1600-X8600

## 1.1 RG-WALL 1600-X8600

	RG-WALL 1600-X8600

LL 1600-X8600

---

LL 1600-X8600

1-2

1~7

RG-WALL 1600-X8600

#				
1	USB	USB-A	USB	USB Key Modem
2	USB MGMT			

## 2

### 2.1

---

RG-WALL 1600-X8600

---

#### 2.1.1

#### 2.1.2

---

#### 2.1.3

---

#### 2.1.4

RG-WALL 1600-X8600

RG-WALL 1600-X8600

---

1~10

3.8

---

**2.1.5**

RG-

### 2.2.3

RG-WALL 1600-X8600

RG-WALL 1600-X8600

0°C-40°C	20%-90%
----------	---------

1.5M

0.4M

---

### 2.2.4

{	0.5	1	3	5
/	1.4 x 10	7 x 10	2.4 x 10	1.3 x 10

RG-WALL 1600-X8600

---

	mg/m <sup>3</sup>	mg/m <sup>3</sup>
	0.2	1.5
	0.006	0.03
	0.04	0.15
	0.05	0.15
	0.01	0.3

### 2.2.5

RG-WALL 1600-X8600

RG-WALL 1600-X8600

100-240 VAC, 47-63 Hz

### 2.2.6

RG-WALL 1600-X8600

---

---

### 2.2.7 EMI

### 2.3

### 2.4

---


---

RG-WALL 1600-X8600

---

### 2.5

---

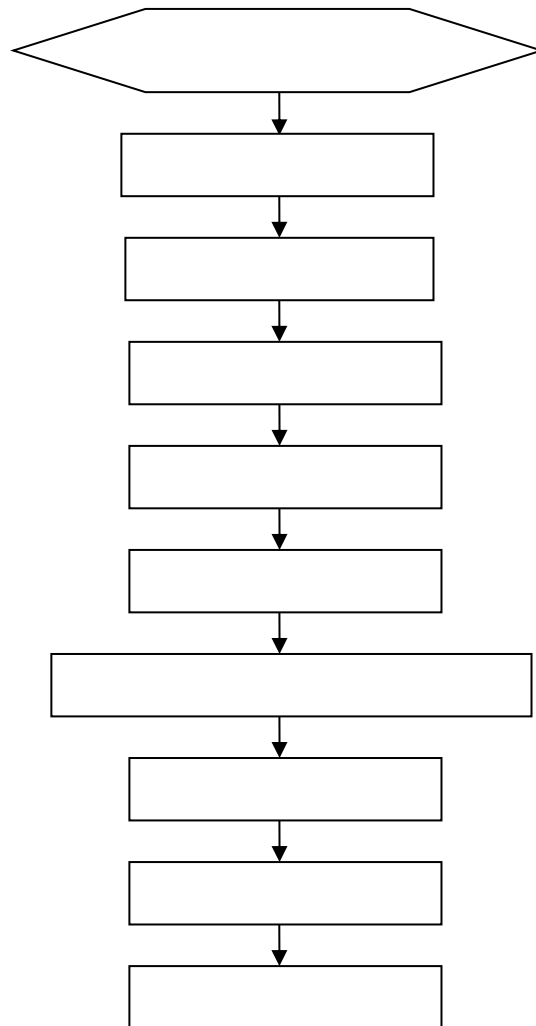
	2	USB	Console	12	4
--	---	-----	---------	----	---

---

---

### 3

#### 3.1



#### 3.2

### 3.3



- 10) ÜR Í ÜR Í
- 11) ÜR Í Ê
- 12) ÜR Í
- 13)

### 3.7

- 14)
- 15)
- 16)

### 3.8

### 3.9

**M M**

---

XFP/SFP+/SFP

---

SFP+/SFP

- 17)
- 18) ÛÛÉÛÛ



26)

27)

---

SFP+/SFP

---

**M**

SFP+

28)

29)

ÙøúÉ

ÙøúÉ

ÙøúÉ

---

SFP+

8

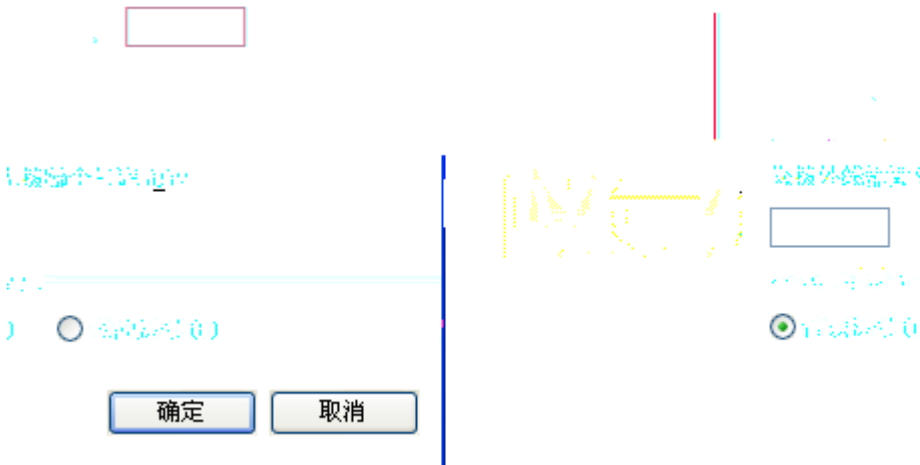
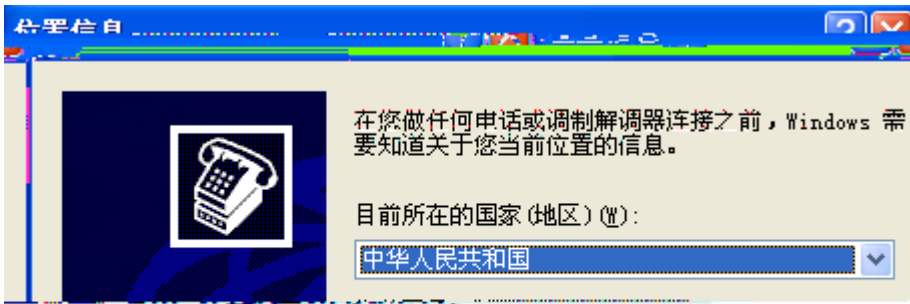
---

# 4

## 4.1

PC	Console	PC	PC	Windows3.1	Terminal	Windows 95/98/NT/2000/XP
30)	ÖÓË			9600	8	1
31)	ÛR Í					
32)	%o +þ%o +þ%o +þ%o +þ%o +					I ËG

4-1



33) %o +þ

4-2



36)

Ł N

I Ę

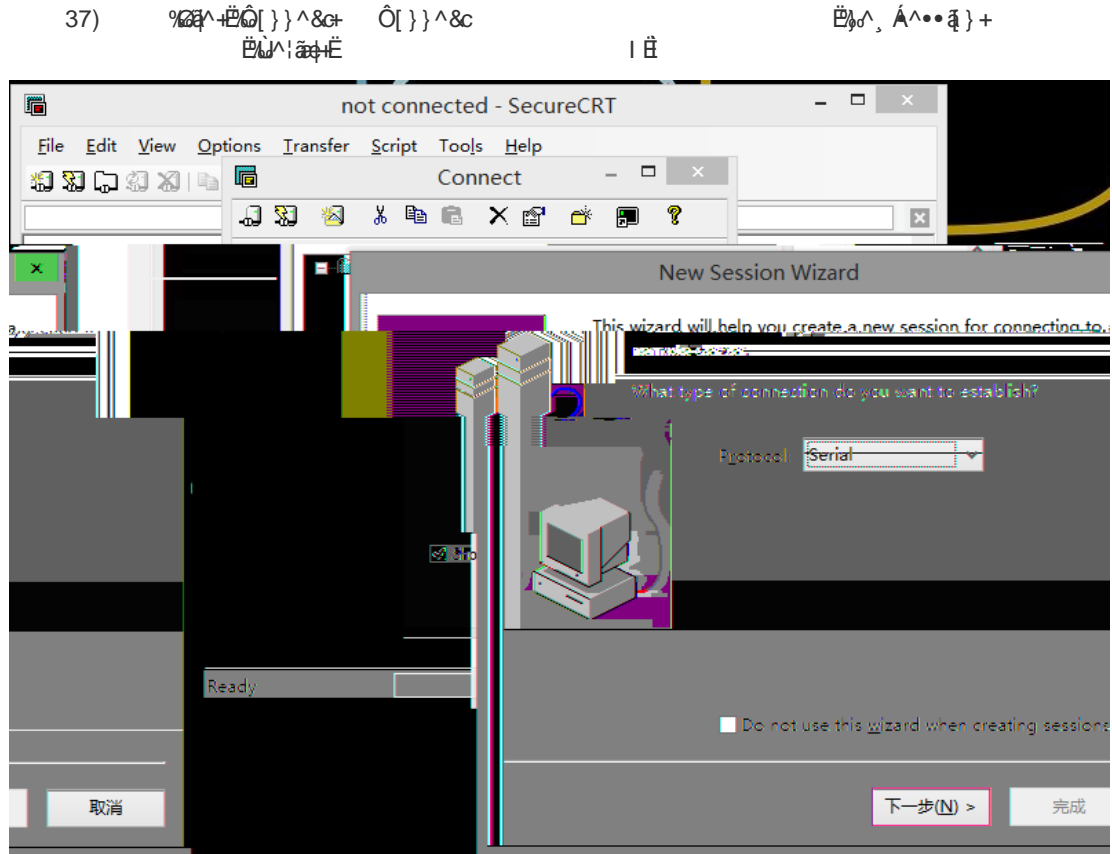
ÚÔ  
Ë

Ô[]•[ ]

Ô[]•[ ]



1



Á Ę

38) %o +Ä I ĘJ

Á

4-9

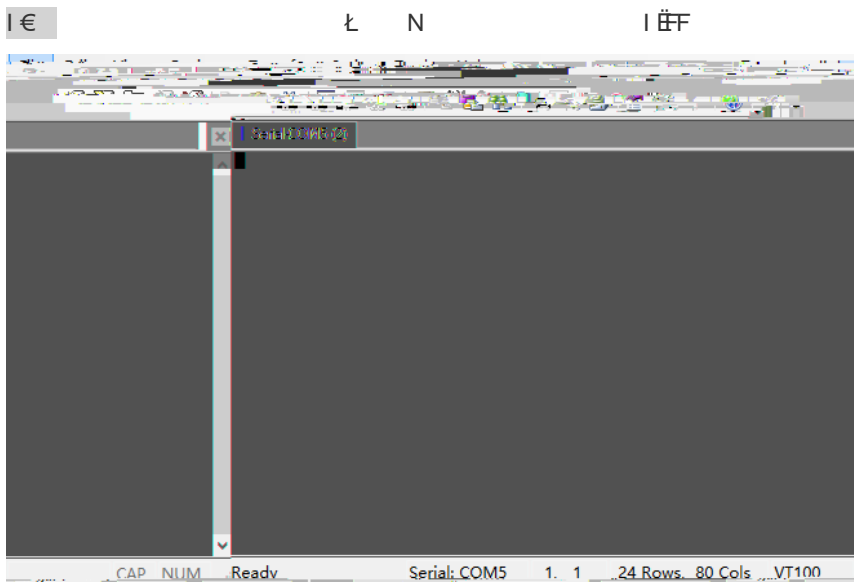
HJ Á  
I €

" "

" "

Ł N

4-10



4-11

## 4.2

PC

5

6		

RG-WALL 1600-X8600

RG-WALL 1600-X8600 Internet

Telnet

RG-WALL 1600-X8600

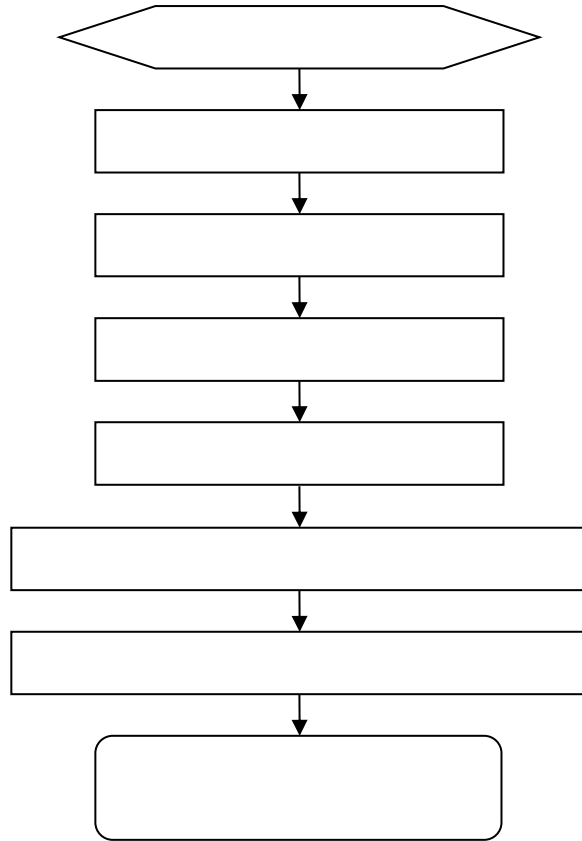
RG-WALL 1600-X8600

---

## 5.2

# 6

## 6.1



## 6.2

.

/

Status      Power

0

1

2

link

1

2

1310nm

1550nm

3

4

# A

. . . . B . . . B . - B □

1000BASE-T/100BASE-TX/10BASE-T

MDI/MDIX Crossover

1000BASE-T IEEE 802.3ab 100 1000BASE-T 4 100-ohm 5 5 4 UTP STP 1000BASE-

T

A-1 1000BASE-T

100BASE-TX/10BASE-T

A 4



# B

RG-WALL 1600-X8600

19

7

5

7

10

SFP+

5

10

25

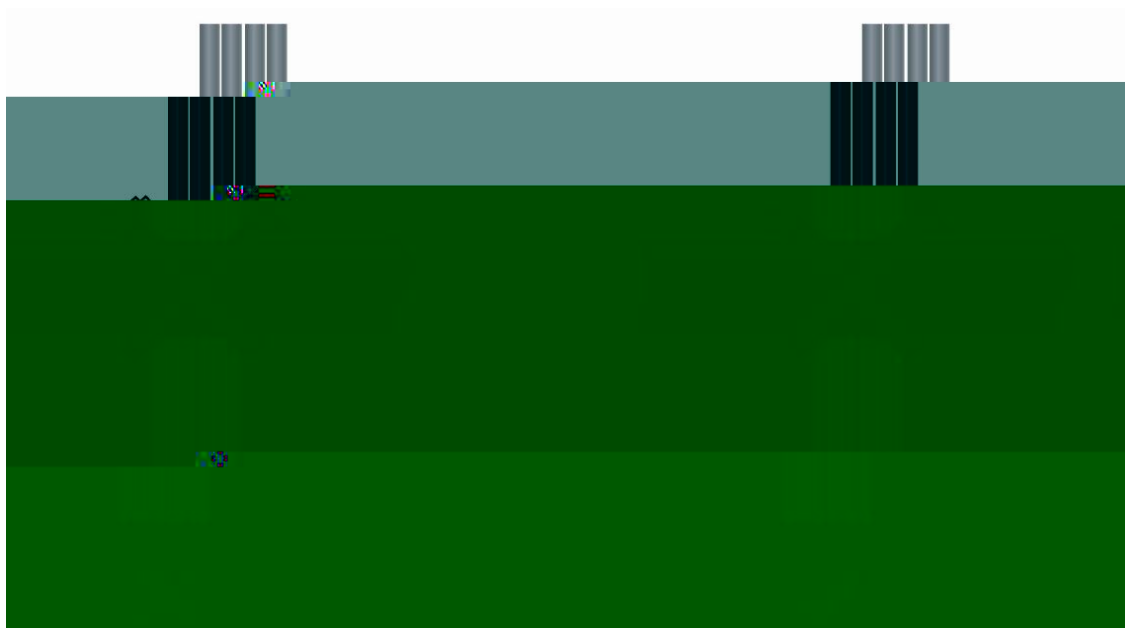
20

10

D-1

D-1

30mm



D-3

D-3

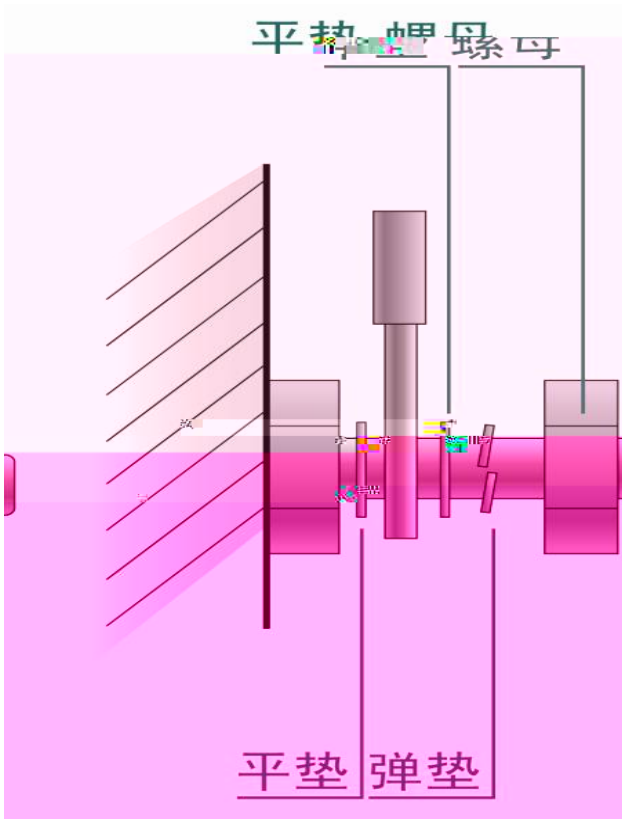


220V

-48V

D-4

D-4



mm	mm
10	80~150
10~30	150~200
30	200~300